

Catalog Download

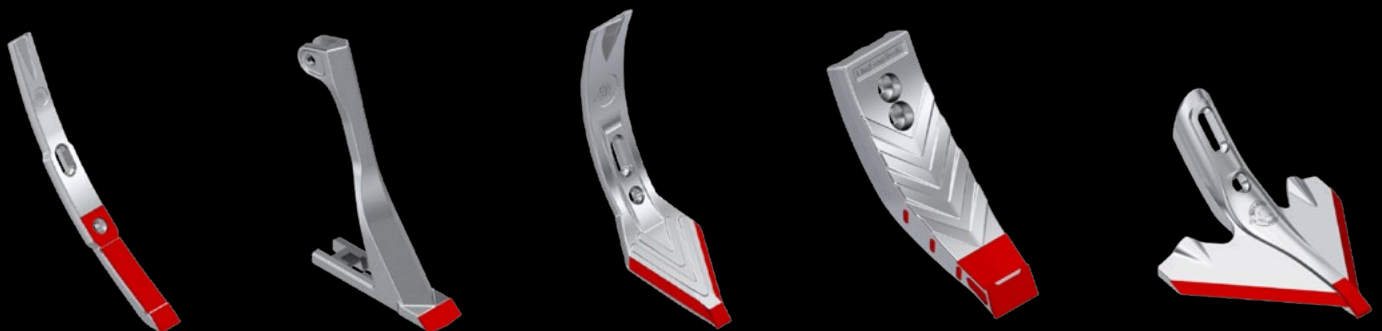
PRODUCT CATALOG

ISSUE 10/2025



Agriculture

TOOLS FOR SOIL CULTIVATION



CONTENT

For Cultivators

Lemken.....	4
Väderstad	6
Universal.....	8

For Seedbed Cultivators

Universal.....	12
----------------	----

For Strip - Tillers

Kuhn.....	14
-----------	----

For Ploughs

Kuhn.....	16
Kverneland.....	18
Lemken.....	20

Hardware

Universal.....	22
----------------	----

About KingKong-Tools

Fan Corner	24
Manufacturing Processes	30
Team.....	32
Company Profile	34

KING KONG TOOLS FOR SOIL CULTIVATION

FOR CULTIVATORS
LEMKEN



weight per piece
9.70 lbs (4.40 kg)

KAR0065

Share HM 85/60x40x288 B13 LA128

Carbide tipped, fitting Lemken

Severe duty version

Application recommendation:

- designed for universal use; stubble cultivation, medium deep soil cultivation; especially recommended for extreme conditions or a very high workload of the machine



KING KONG TOOLS FOR SOIL CULTIVATION

FOR CULTIVATORS
VÄDERSTAD



weight per piece
5.16 lbs (2.34 kg)

KAR0101

Share HM50x33x250 B13 LA28

Tungsten carbide tipped, fitting Väderstad

Severe duty version

Application recommendation:

- stubble cultivation, medium deep soil cultivation; especially recommended for extreme conditions or a very high workload of the machine



weight per piece
7.56 lbs (3.43 kg)

KAR0102

Share HM80/50x34x250 B13 LA28

Tungsten carbide tipped, fitting Väderstad

Severe duty version

Application recommendation:

- stubble cultivation, medium deep soil cultivation; especially recommended for extreme conditions or a very high workload of the machine



KING KONG TOOLS FOR SOIL CULTIVATION

FOR CULTIVATORS
UNIVERSAL



weight per piece
9.55 lbs (4.33 kg)

KAR0103

Share HM 90/50x40x291 B13 LA44-72

Tungsten carbide tipped, universally fitting

Severe duty version

Application recommendation:

- stubble cultivation, medium deep soil cultivation; especially recommended for extreme conditions or a very high workload of the machine



weight per piece
9.48 lbs (4.30 kg)

Compatible hardware:
KSI247, KSI248, KSI249

KAR0021-1

Middle share in (double) heart shape HM P 135x20x443
B13 LA45-80 R300

Tungsten carbide tipped, universally fitting

Severe duty version

Application recommendation:

- designed for universal use; working depth approx. 5-12cm; stubble cultivation, medium depth soil cultivation



weight per piece
5.09 lbs (2.31 kg)

KAR0083

Narrow share HM 50x26x310 B13 LA44-66

Tungsten carbide tipped, universally fitting

Severe duty version

Application recommendation:

- designed for universal use; stubble cultivation, medium depth soil cultivation, seedbed preparation



weight per piece
11.44 lbs (5.19 kg)

KAR0086

Narrow share HM 60x33x481 B13 LA44-70/105-135
R300

Tungsten carbide tipped, universally fitting

Severe duty version

Application recommendation:

- medium to deep soil cultivation



weight per piece
11.71 lbs (5.31 kg)

KAR0087

Narrow share HM 60x33x500 B13 LA105-129 R600

Tungsten carbide tipped, universally fitting

Severe duty version

Application recommendation:

- medium to deep soil cultivation



weight per piece
8.44 lbs (3.83 kg)

KAR0091

Narrow share HM 40x26x482 B13 LA44-70/105-135
R300

Tungsten carbide tipped, universally fitting

Severe duty version

Application recommendation:

- deep soil cultivation

KING KONG TOOLS FOR SOIL CULTIVATION

FOR CULTIVATORS
UNIVERSAL



KAR0092

Narrow share HM 40x30x500 B13 LA105-129 R600

Tungsten carbide tipped, universally fitting

Severe duty version

Application recommendation:

- deep soil cultivation

weight per piece
8.49 lbs (3.85 kg)



KAR0099

All-purpose duck-foot share HM 230x8 B13 LA44-72

Reinforced body made of wear-resistant steel; additional wear protection of the tip and lateral cutting edges by solid tungsten carbide plates

Severe duty version

Application recommendation:

- designed for universal use; maximum working depth approx. 5cm; flat stubble cultivation, seedbed cultivation, mechanical weed control

weight per piece
6.37 lbs (2.89 kg)



KING KONG TOOLS FOR SOIL CULTIVATION

FOR SEEDBED CULTIVATORS
UNIVERSAL



weight per piece
3.77 lbs (1.71 kg)

KAR0084

Narrow share HM 55x35x243 B11 LA45-58

Tungsten carbide tipped, universally fitting

Severe duty version

Application recommendation:

- stubble cultivation, low depth soil cultivation, seedbed preparation, mechanical weed control



weight per piece
3.75 lbs (1.70 kg)

KAR0085

Narrow share HM 55x35x243 B13 LA45-58

Tungsten carbide tipped, universally fitting

Severe duty version

Application recommendation:

- stubble cultivation, low depth soil cultivation, seedbed preparation, mechanical weed control



weight per piece
2.01 lbs (0.91 kg)

KAR0100

Narrow share HM 35/25x28x171 B11

Tungsten carbide tipped, universally fitting

Severe duty version

Application recommendation:

- stubble cultivation, low depth soil cultivation, seedbed preparation, mechanical weed control



KAR0024

All-purpose duck-foot share 200x8 B11 LA40-65

Body made of wear-resistant steel; additional reinforcement in the area of the holding fixture and the bolt holes

Standard version



weight per piece
2.60 lbs (1.18 kg)

Compatible hardware:
KSI250, KSI251

Application recommendation:

- designed for universal use; maximum working depth approx. 5cm; flat stubble cultivation, seedbed cultivation, mechanical weed control

KAR0024-PLA

All-purpose duck-foot share P 200x8 B11 LA40-65

Reinforced body made of wear-resistant steel; additional wear protection of the tip and lateral cutting edges by PLA hardfacing

Severe duty version



weight per piece
2.60 lbs (1.18 kg)

Compatible hardware:
KSI250, KSI251

Application recommendation:

- designed for universal use; maximum working depth approx. 5cm; flat stubble cultivation, seedbed cultivation, mechanical weed control

KAR0022-1

All-purpose duck-foot share HM 200x8 B11 LA40-65

Reinforced body made of wear-resistant steel; additional wear protection of the tip and lateral cutting edges by solid tungsten carbide plates

Severe duty version



weight per piece
3.95 lbs (1.79 kg)

Compatible hardware:
KSI250, KSI251

Application recommendation:

- designed for universal use; maximum working depth approx. 5cm; flat stubble cultivation, seedbed cultivation, mechanical weed control

KING KONG TOOLS FOR SOIL CULTIVATION

FOR STRIP - TILLERS
KUHN



weight per piece
7.69 lbs (3.49 kg)

KAR0010-2

Replacement tip fitting Kuhn strip-till machines of the „Striger 100“ and „Gladiator“ series

Body and tip made out of wear resistant steel

Standard version with an extra reinforced main body

Application recommendation:

- designed for universal use; for regular ground conditions recommended

Fits on models:

- Kuhn 300, Kuhn 44OR, Kuhn 60OR, Gladiator 1205



weight per piece
8.25 lbs (3.74 kg)

KAR0010-2-P



Replacement tip fitting Kuhn strip-till machines of the „Striger 100“ and „Gladiator“ series

Body made out of wear resistant steel, tip with KingShield hardfacing for additional wear protection

Heavy duty version with an extra reinforced main body

Application recommendation:

- designed for universal use; for abrasive ground conditions recommended

Fits on models:

- Kuhn 300, Kuhn 44OR, Kuhn 60OR, Gladiator 1205



weight per piece
7.80 lbs (3.54 kg)

KAR0011-1

Replacement tip fitting Kuhn strip-till machines of the „Striger 100“ and „Gladiator“ series

Body made out of wear resistant steel, tip with two tungsten carbide inserts for maximum wear protection

Severe duty version with an extra reinforced main body

Application recommendation:

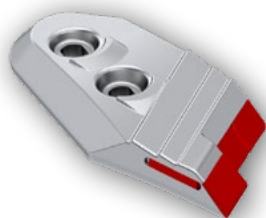
- designed for universal use; for extreme ground conditions (e.g. very heavy and/or abrasive soils); for power users and machines with high workload

Fits on models:

- Kuhn 300, Kuhn 44OR, Kuhn 60OR, Gladiator 1205

KING KONG TOOLS FOR SOIL CULTIVATION

FOR PLOUGHS
KUHN



weight per piece
5.29 lbs (2.40 kg)

KAR0118

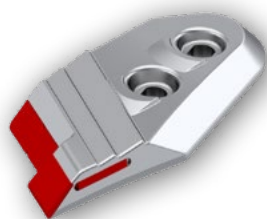
Share point L HM 99x34x215 B13 LA52

Tungsten carbide tipped, fitting Kuhn

Severe duty version left

Application recommendation:

- Medium-depth and deep, turning soil cultivation



weight per piece
5.29 lbs (2.40 kg)

KAR0119

Share point R HM 99x34x215 B13 LA52

Tungsten carbide tipped, fitting Kuhn

Severe duty version right

Application recommendation:

- Medium-depth and deep, turning soil cultivation



weight per piece
5.34 lbs (2.42 kg)

KAR0120

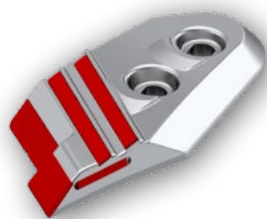
Share point L HM-HD 99x34x215 B13 LA52

Tungsten carbide tipped, fitting Kuhn

Severe duty version left, with additional carbide protection on the tool body

Application recommendation:

- Medium-depth and deep, turning soil cultivation



weight per piece
5.34 lbs (2.42 kg)

KAR0121

Share point R HM-HD 99x34x215 B13 LA52

Tungsten carbide tipped, fitting Kuhn

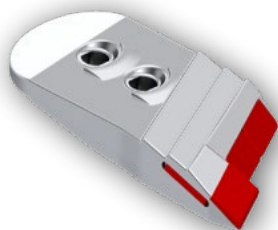
Severe duty version right, with additional carbide protection on the tool body

Application recommendation:

- Medium-depth and deep, turning soil cultivation

KING KONG TOOLS FOR SOIL CULTIVATION

FOR PLOUGHS
KVERNELAND



KAR0122

Share point L HM 84x39x216 B13 LA40

Tungsten carbide tipped, fitting Kverneland

Severe duty version left

Application recommendation:

- Medium-depth and deep, turning soil cultivation

weight per piece
4.96 lbs (2.25 kg)



KAR0123

Share point R HM 84x39x216 B13 LA40

Tungsten carbide tipped, fitting Kverneland

Severe duty version right

Application recommendation:

- Medium-depth and deep, turning soil cultivation

weight per piece
4.96 lbs (2.25 kg)



KAR0124

Share point L HM-HD 84x39x216 B13 LA40

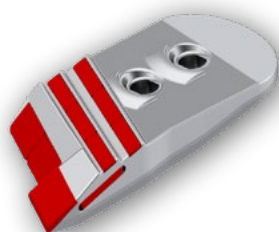
Tungsten carbide tipped, fitting Kverneland

Severe duty version left, with additional carbide protection on the tool body

weight per piece
5.11 lbs (2.32 kg)

Application recommendation:

- Medium-depth and deep, turning soil cultivation



KAR0125

Share point R HM-HD 84x39x216 B13 LA40

Tungsten carbide tipped, fitting Kverneland

Severe duty version right, with additional carbide protection on the tool body

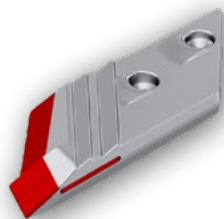
weight per piece
5.11 lbs (2.32 kg)

Application recommendation:

- Medium-depth and deep, turning soil cultivation

KING KONG TOOLS FOR SOIL CULTIVATION

FOR PLOUGHS
LEMKEN



weight per piece
9.85 lbs (4.47 kg)

KAR0113

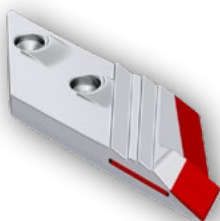
Share point R HM 100x40x334 B13 LA85

Tungsten carbide tipped, fitting Lemken

Severe duty version right

Application recommendation:

- Medium-depth and deep, turning soil cultivation



weight per piece
9.85 lbs (4.47 kg)

KAR0114

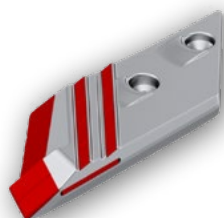
Share point L HM 100x40x334 B13 LA85

Tungsten carbide tipped, fitting Lemken

Severe duty version left

Application recommendation:

- Medium-depth and deep, turning soil cultivation



weight per piece
9.90 lbs (4.49 kg)

KARO115

Share point R HM-HD 100x40x334 B13 LA85

Tungsten carbide tipped, fitting Lemken

Severe duty version right, with additional carbide protection on the tool body

Application recommendation:

- Medium-depth and deep, turning soil cultivation



weight per piece
9.90 lbs (4.49 kg)

KARO116

Share point L HM-HD 100x40x334 B13 LA85

Tungsten carbide tipped, fitting Lemken







Severe duty version left, with additional carbide protection on the tool body



















Application recommendation:

- Medium-depth and deep, turning soil cultivation

KING KONG TOOLS FOR SOIL CULTIVATION

**HARDWARE
UNIVERSAL**

	KSI250 Countersunk screw with square neck M10x60 12.9 DIN608	weight per piece 
	KSI436 Countersunk screw with square neck M10x1,5x60 12.9 DIN608, coated	weight per piece 
	KSI251 Hexagon nut with locking teeth M10 10.9 DIN6923	weight per piece 

	KSI300 Countersunk screw with square neck M12x40 12.9 DIN608	weight per piece	
	KSI301 Countersunk screw with square neck M12x50 12.9 DIN608	weight per piece	
	KSI247 Countersunk screw with square neck M12x60 12.9 DIN608	weight per piece	
	KSI306 Countersunk screw with square neck M12x70 12.9 DIN608	weight per piece	
	KSI310 Countersunk screw with square neck M12x80 12.9 DIN608	weight per piece	
	KSI248 Countersunk screw with square neck M12x90 12.9 DIN608	weight per piece	
	KSI442 Countersunk screw with square neck M12x100 12.9 DIN608	weight per piece	
	KSI443 Countersunk screw with square neck M12x110 12.9 DIN608	weight per piece	
	KSI249 Hexagon nut with locking teeth M12 10.9 DIN6923	weight per piece	

FAN CORNER

Introducing the brandnew KingKong-Tools fan collection.



Gear up now with genuine KingKong-Tools apparel, toys, accessories, and more. The perfect gift for business partners and friends.

We strive to provide high quality products in every respect, that's why you can rely on outstanding workmanship and durability of our merchandise articles, just as you can do in regards to our wearparts.

Get into the monkey business and enjoy the latest KingKong-Tools collection!.

www.kingkong-tools.com



Men (MAK0001): \$98.00
Women (MAK0002): \$89.00

Sweat Jacket Contrast Performance

Extremely hard-wearing sweat jacket with contrasting coloured inserts on the sides, shoulders and sleeves, dimensionally stable cuffs with LYCRA® component, non-roughened inside (French terry), neckband, high-quality front zip and side pockets with zip.

Colors: Black, Red
Sizes: XS-XXL
Material: 50 % Cotton, 50 % Polyester



Men (MAK0003): \$106.00
Women (MAK0004): \$99.00

Tec-Jacket KingKong-Tools

Functional, sporty cut jacket with extended, slightly rounded back, dividing seams for perfect fit, stand-up collar and sleeve cuffs. High-quality, contrasting colour two-way front zip with chin protection, pre-laid side seams and slide-in pockets with click-down zips.

Colors: Black, Red
Sizes: XS-XXL
Material: 52 % Polyester, 38 % Polyamid, 10 % Spandex



Men (MAK0005): \$90.00
Women (MAK0006): \$87.00

Rain Jacket KingKong-Tools

Lightweight, functional, waterproof and windproof rain jacket with climate regulating mesh lining, comfortable soft fleece on the inside of the collar, a hood that can be integrated into the collar and adjusted in width, high-quality front zip with double windstop flap and outside pockets with zip.

Colors: Black, Red
Sizes: XS-XXL
Material: 2-Layer-Laminat made of 100 % Polyester



Men (MAK0007): \$115.00
Women (MAK0008): \$111.00

Light-Softshell Vest

Lightweight, breathable, hard-wearing, water- and windproof soft shell vest with high-quality 2-way front zip with internal wind protection flap, chin protection and reflective piping as well as side zip pockets.

Colors: Black, Red
Sizes: XS-XXL
Material: 2-Layer-Laminat made of 100 % Polyester



Men (MAK0009): \$139.00
Women (MAK0010): \$130.00

Softshell Jacket KingKong-Tools

Warming, breathable, water- and windproof softshell jacket with detachable hood, adjustable hem with drawcord, high-quality 2-way front zipper with inner wind protection flap and chin protection as well as zipper pocket on left sleeve and side zipper pockets.

Colors: Black, Red
Sizes: XS-XXL
Material: Softshell made of Interlock-3-Layer-Laminat (100 % Polyester)



Men (MAK0011): \$25.00
Women (MAK0012): \$25.00
Kids (MAK0013): \$20.00

T-Shirt: My boss is a monkey

T-shirt with round neck and funny „My boss is a monkey“ print. Available as men's, women's and children's shirt.

Colors: Black
Sizes: XS-XXL / Kids Sizes: 128-176
Material: Single-Jersey made of 100 % Cotton



Men (MAK0014): \$25.00
Women (MAK0015): \$25.00
Kids (MAK0016): \$20.00

T-Shirt: KingKong-Tools

T-shirt with round neck and fashionable „KingKong-Tools“ print. Available as men's, women's and children's shirt.

Colors: Black
Sizes: XS-XXL / Kids Sizes: 128-176
Material: Single-Jersey made of 100 % Cotton

FAN CORNER



Part#: MAK0017
Price: \$7.90

Cup „Since 1996“

Beautiful cup with KingKong-Tools retro print „Since 1996“ and striking red color on the inside.
Easy to clean, dishwasher safe.

Color: Black / Red



Part#: MAK0020
Price: \$10.90

Classic Cap: KingKong-Tools

Classic cap made of very robust material and KingKong-Tools logo print.

Color: Black
Sizes: One size fits all



Part#: MAK0021
Price: \$13.90

Sport Cap Black

Fashionable sports cap with KingKong-Tools logo on the side. Ideal for hot summer days due to its light fabric.

Color: Black
Sizes: One size fits all



Part#: MAK0021
Price: \$13.90

Sport Cap Grey

Fashionable sports cap with KingKong-Tools logo on the side. Ideal for hot summer days due to its light fabric.

Color: Grey
Sizes: One size fits all



Part#: MAK0022
Price: \$11.00

Beanie KingKong-Tools

Warm knitted hat with KingKong-Tools logo for cold winter days.

Color: Black
Sizes: One size fits all



Part#: MAK0027
Price: \$12.00

KingKong-Tools Buff

Very versatile buff with printed KingKong-Tools logos. Can be used both as a hose scarf and as headgear.

Color: Black



Part#: MAK0023
Price: \$79.90

Wooden block case

Beautiful natural wooden block case with 60 natural high quality building blocks for constructing towns, houses and whatever other phantasies little constructors may have. Suitable for children age 2 - 8.

60 parts, manufactured at local handicapped workshops



Small (MAK0024): \$18,00
Medium (MAK0025): \$20,00

KingKong-Tools Gorilla

A little Gorilla to love. Black with original brown spot on head; grey back, fluffy, high quality. Made in Germany.

Sizes:
Small: 20cm high
Medium: 25cm high

FAN CORNER



Small (MAK0028): \$20.00
Large (MAK0029): \$30.00

KingKong-Tools Towel / Shower Towel

Cuddly shower towel with KingKong-Tools logo. Available in two different sizes.

Color: White
Material: 100% Cotton
Sizes: Small: 50x100 cm
Large: 70x140 cm



Part#: MAK0030
Price: \$23.90

Umbrella

Eye-catching, red umbrella with imprinted KingKong-Tools logo.

Color: Red



Part#: MAK0031
Price: \$12.00

KingKong-Tools Cards

Card game classics in the KingKong-Tools Edition for the whole family. First to discard all cards wins.



Part#: MAK0034
Price: \$39.90

KingKong-Tools Solar Powerbank

Solar Powerbank with KingKong-Tools logo imprint and integrated LED flashlight in nice aluminum design. Simply place in the sun to start the charging process. If the sun is not shining, simply recharge the powerbank via USB. Powerbank comes with overvoltage protection and connectors for Android and iOS devices.

Material: Aluminum
Capacity: 8000 mAh



KingKong-Tools „Rubik's Cube“

Challenging magic cube for puzzling. With different colored KingKong-Tools logos on all sides.

Part#: MAK0019
Price: \$24.90



King Kong Tools Sticker Set

High quality KingKong-Tools logo stickers with transparent background and die cut logo. Made for outdoor use.

Color: White, Black
Size: Logo Diameter = 9.5 cm (small) and 24.5 cm (large)

Part#: MAK0032
Price: \$12.90



KingKong-Tools Socks

Fashionable socks with King Kong Tools pattern for women, men and young people. The mixture of soft cotton, polyamide and spandex offers a very good fit and comfort.

Color: Black
Sizes: 36-40 / 41-46
Material: 70% Cotton, 20% Polyamide, 3% Spandex

Part#: MAK0033
Price: \$17.90

MANUFACTURING PROCESSES

Carbide tipped tools

The manufacture of our high-performance carbide-tipped tools requires several production steps of high complexity. Every single one of these steps contributes crucially to the final quality of the finished product. This is the reason why we focus so intensely on quality control and inspections throughout the complete manufacturing process.

Fabrication of the carbide tips

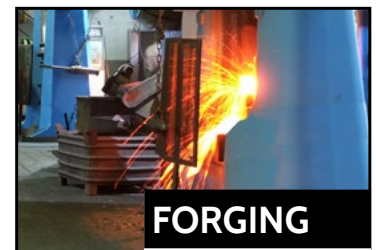
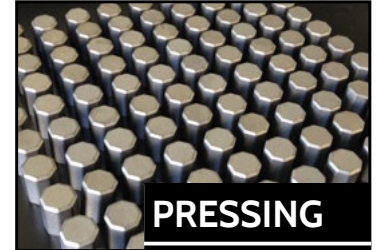
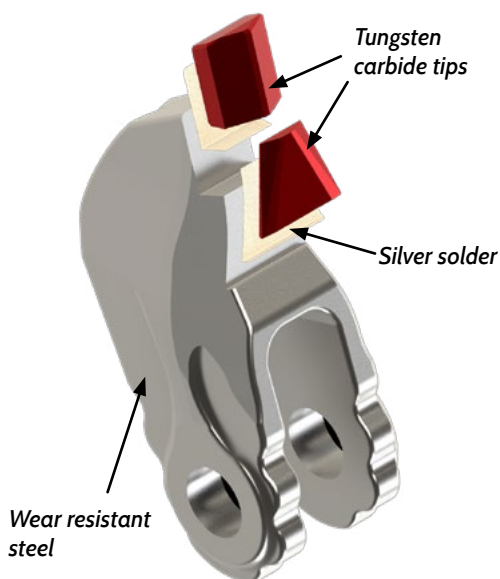
The carbide cutting inserts of our tools are made by pressing and sintering of powder mixtures consisting mainly of tungsten carbide (WC) and Cobalt (Co). The individual powder recipe, its grain size, and the carbide geometry are exactly adjusted to the intended application of the tool. First, the different powder components are mixed and then milled to the designated grain size. In the following step, the powder mixture is prepared for pressing by granulation in a spray tower. Mix ratio, granule size, and other properties of the granulate are permanently monitored in the laboratory and then released for the subsequent manufacturing processes.

Connecting carbide tip and tool body

The body of the tool is made of high quality wear resistant steel, drop forged and machined to a very high precision. Specifically developed brazing alloys are used to fix the carbide inserts extremely tight to the steel body. The holding force of the brazing joint is permanently monitored and documented by breaking tests. According to the application requirements, the steel body will be hardened, either partly or completely, thus reaching a very high resistance against wear and tear.

A final jet blasting gives the tools a silk-mat shining surface which also serves as an efficient rust-protective finish.

Our strictly observed permanent quality control of all manufacturing steps enables us to supply tools of consistently high performance and reliability.





Tools with hardfacing

King Grit



The King Grit technology is based on the MIG (metal inert gas) welding process where an electric arc burns between the melting and the welding rod in an inert gas atmosphere at extremely high temperatures. Computer-controlled feeding of carbide chips into the welding zone creates a coarse grained surface with carbide chips equally distributed throughout the King Grit layer. Tools protected by King Grit show very high wear resistance, extreme impact tolerance and unmatched cutting ability and are used in the most severe cutting conditions.



King Shield



In certain applications, cutting ability is not what you are looking for. For example, round shank bits working in abrasive rock experience enormous wear along the steel body of their cutting heads. King Shield perfectly protects the carbide tip from being washed out.

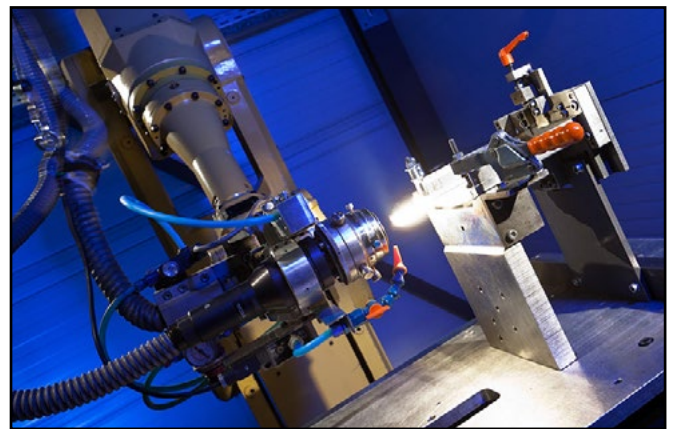
Here, the MIG electrode consists of a special alloy with microscopic WC (tungsten carbide) particles imbedded. The extreme temperatures create a plasma welding layer with a smooth and extremely hard surface. It resists the enormous abrasiveness of quartz containing minerals while showing a high tolerance against impact loads.



Plasma-Laser-Hardfacing (PLA)

Another technology of KingKong-Tools is the PLA process, also called plasma laser hardfacing. During the plasma laser hardfacing, a laser creates a melted bath on the tool surface into which a defined amount of metal powder is added through a nozzle. The welded beads can create almost any desired shape. This flexibility in applying the wear protection ensures that the cutting edges and base bodies of our tools are optimally and effectively protected against wear.

Using a special manufacturing process, our 3D laser allows us to construct metallic material applications on existing tools as if it were one cast without any loss of quality, density, and free of pores or cracks. As a result, the plasma laser hardfacing process offers exceptional wear protection while maintaining the aggressive cutting properties of our blade tools.



TEAM

At King Kong-Tools, we strive to offer you the best products and customer service possible.

We combine advanced manufacturing processes with personalized consulting from our experienced and dedicated team, ready to support your wear part needs.

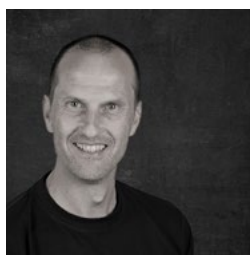
Feel free to contact us with any questions or feedback—we look forward to hearing from you!



Hardy King



Kai Fetscher



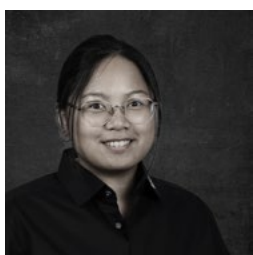
Axel Rogg



Alexandra Teufel



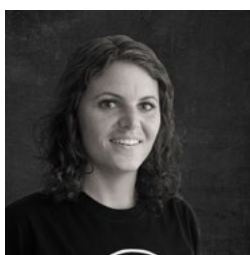
Franziska Pfundstein



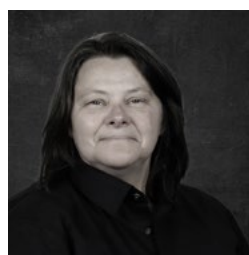
Sarah Krug



Cathrin Noder



Franziska Kroner



Jutta Haller



Frank Dresel



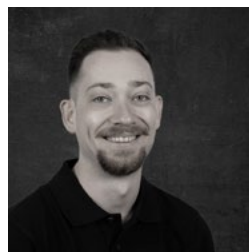
Benjamin Beißwanger



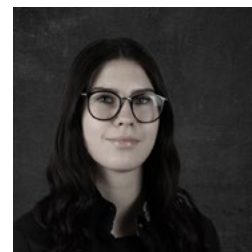
Nils Wagner



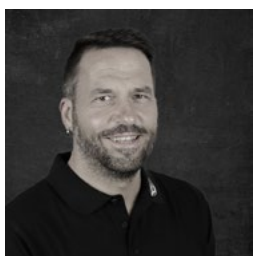
Lars Angenendt



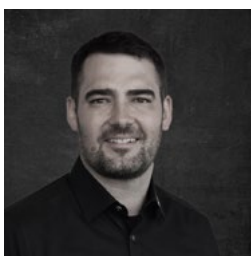
Dennis Petschik



Katharina Roth



Christian Wick



Lukas Gaus



Ingo Drongowski



Claudio Del Corso



Mustafa Elazri



Jens Munk



Philipp Thomann



Martina Rapp



Sofia Vázquez Topete



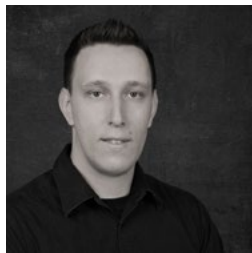
Elias Bernhardt



Anjuska Kogal



Mihaela Proper



Alen Ivanušič



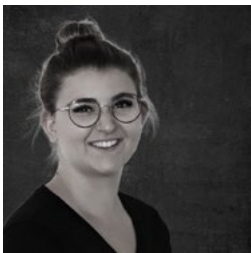
Sharon Vargas



Kasey Coleman



José Alvarado



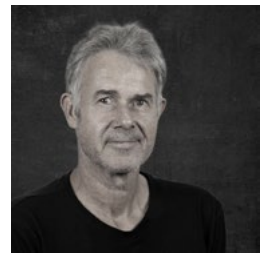
Lena Günter



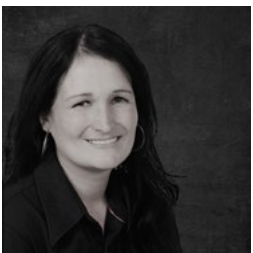
Ulf Zimmermann



Stefan Ganter



Michael Staiger



Elizabeth Szabo



Tibor Szabo



Andrzej Król

COMPANY PROFILE

King Kong Tools: The right choice for reliable performance.

Being used all over the world and under the most severe conditions, our teeth mulch in Canada and the United States, help to maintain roads in Sweden or Austria, or fulfill their daily duties in hundreds of grinders in Germany.

The reliability and the high availability of our tools as well as the fast handling convince more and more customers all over the world.

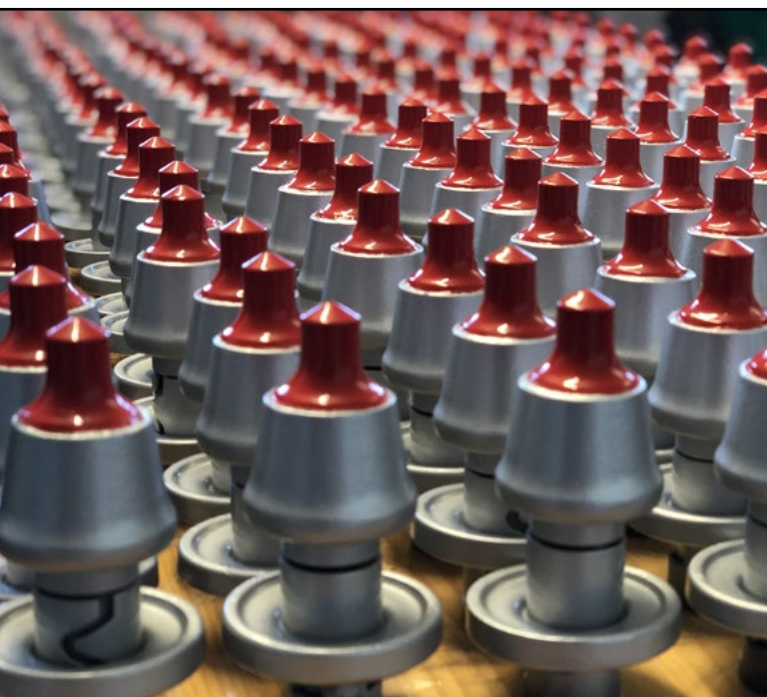
Our young, highly motivated team will be happy to assist you in selecting a suitable tool for your machine and ensures quick processing of your order as well as an on-time delivery. For a variety of models from established manufacturers of forestry mulchers, stump cutters, wood grinders, rock crushers and wood chippers as well as drilling heads, road milling machines, trenchers and agricultural soil tillage machines, our suitable tools are ready to be shipped from our warehouses in Germany and the USA.

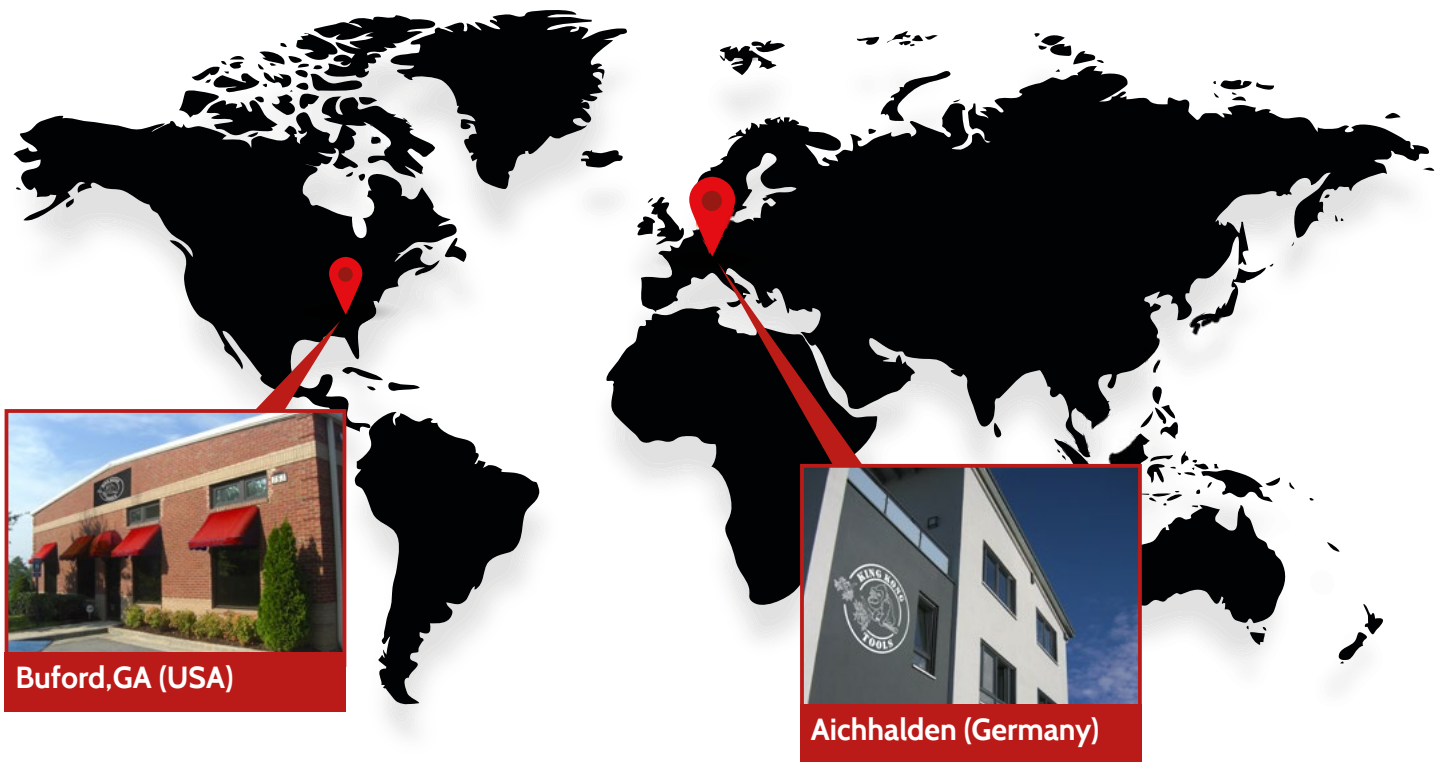
Our products are sand-blasted, packaged in handy units and are subject to a strict quality control - this is what distinguishes us as a German company.

In addition, with many years of application experience, we can optimize the tool specifically for your shredding task.

Our experienced application technicians first analyse the situation on-site together with you. On this basis they create with you an individual solution. The advantage for you is immediately noticeable: by choosing the suitable geometry and carbide type, we increase considerably the output of your mulcher, shredder, chipper, stone crusher or milling machine and extend the service life of your tools at once. That saves you time and money.

We keep our promises. Take us at our word!





King Kong Tools is a globally operating company with its headquarters in Aichhalden in the German Black Forest.

The immediate availability of all wear tools is an essential request of our customers. Hence, we carry substantial stock of all standard parts at our warehouse locations in the US as well as at our headquarters in Germany. We serve the markets with sales and service staff operating from there.

Headquarters USA

Since 2009 our customers in Canada and the USA have been advised and supplied from the US headquarters in Buford, Georgia.



KingKong-Tools GmbH & Co. KG

Karl-Simon-Str. 12
78733 Aichhalden
Germany



+49-7422-270099-100



KingKong-Tools LLC

753 Church Street
Buford, GA 30518
USA



+1-678-765-7930



www.kingkong-tools.com



Recycling



Forestry



Construction



Agriculture