

Catalog Download

# PRODUCT CATALOG

ISSUE 10/2025



Recycling

# RECYCLING

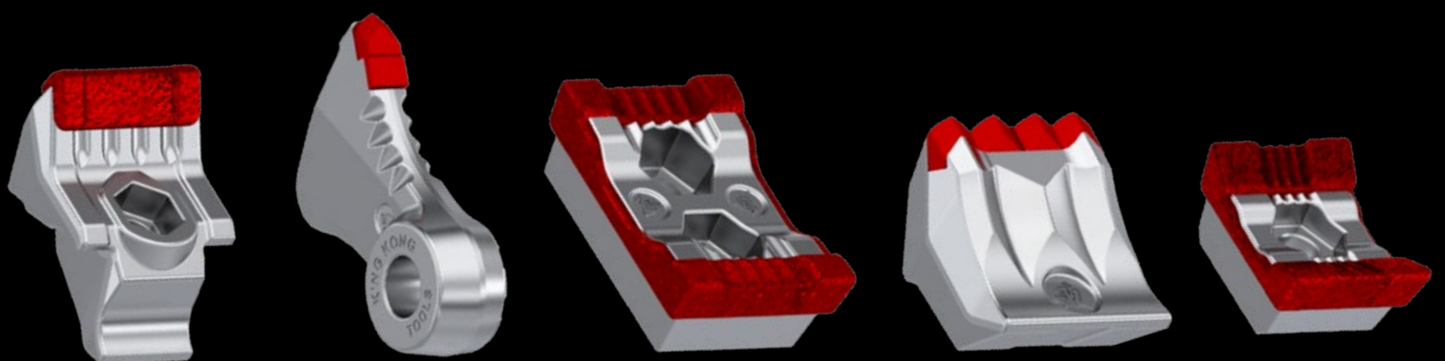








# TOOLS FOR WOOD RECYCLING





# CONTENT

---

## Tools for Wood Recycling .....4

For Bandit Beast ®.....	6
For Diamond Z.....	16
For Doppstadt high speed.....	18
For Doppstadt slow speed.....	26
For Eggersmann.....	32
For Hammel.....	34
For Haybuster / Duratech.....	36
For Hogzilla.....	38
For Husmann.....	40
For Jenz.....	42
For Jones Manufacturing.....	50
For Komptech.....	52
For Morbark.....	56
For Peterson Pacific.....	62
For Precision Husky.....	68
For Rexworks / Maxigrind.....	70
For Rotochopper.....	72
For Tana.....	74

For Terex CBI.....	76
--------------------	----

For TEREX Ecotec.....	78
-----------------------	----

For Vermeer.....	84
------------------	----

For Willibald.....	90
--------------------	----

## Tools for Compost Turners..... 98

For Willibald.....	100
--------------------	-----

## About KingKong-Tools..... 102

Fan Corner.....	102
-----------------	-----

Manufacturing Processes.....	108
------------------------------	-----

Team.....	110
-----------	-----

Company Profile.....	112
----------------------	-----



# KING KONG TOOLS FOR WOOD RECYCLING

FOR BANDIT  
BEAST®



## KFZ195-1

Replacement tooth fitting Bandit Beast® grinders

1" Cutter with solid tungsten carbide tip

Standard version



weight per piece  
1.45 lbs (0.66 kg)



Compatible hardware  
KFS1014, KSI117

### Application recommendation:

- tree logs and stumps, hardwood, green waste

### Fits on models:

- Bandit Beast 2680®, Bandit Beast 3680®, Bandit Beast 4680®



## KFZ212

Replacement tooth fitting Bandit Beast® grinders

Splitter with solid tungsten carbide tip

Standard version



weight per piece  
1.45 lbs (0.66 kg)



Compatible hardware  
KFS1014, KSI117

### Application recommendation:

- tree logs and stumps, hardwood, green waste

### Fits on models:

- Bandit Beast 2680®, Bandit Beast 3680®, Bandit Beast 4680®



## KFZ262

Replacement tooth fitting Bandit Beast® grinders

Shingle tooth with solid tungsten carbide tip

Standard version



weight per piece  
1.56 lbs (0.71 kg)



Compatible hardware  
KFS1014, KSI117

### Application recommendation:

- shingle grinding, very abrasive applications

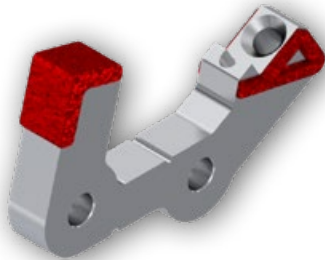
### Fits on models:

- Bandit Beast 2680®, Bandit Beast 3680®, Bandit Beast 4680®





## KHZ001



Tool holder in the conventional design fitting Bandit Beast® wood grinders

Holder made out of high quality steel - with hardfacing for additional wear protection

Standard version

weight per piece  
13.35 lbs (6.07 kg)



### Fits on models:

- Bandit Beast 2680®, Bandit Beast 3680®

## KHZ019



Tool holder in the conventional design fitting Bandit Beast® wood grinders

Holder made out of high quality steel

Standard version with replaceable raker

weight per piece  
12.96 lbs (5.88 kg)



### Fits on models:

- Bandit Beast 2680®, Bandit Beast 3680®

## KFS1014



Nut  
7/8" - 14 UNF

weight per piece  
0.11 lbs (0.05 kg)



## KSI117



Lock nut  
7/8" - 14 UNF

weight per piece  
0.11 lbs (0.05 kg)



### Disclaimer:

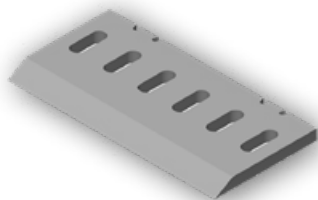
BANDIT® and THE BEAST® are registered trademarks of Bandit Industries Inc. The parts shown are manufactured by King Kong and are not approved or endorsed by Bandit Industries Inc. for use in Bandit machines.



# KING KONG TOOLS FOR WOOD RECYCLING

FOR BANDIT  
BEAST®

## KFM144



All-purpose chipper knife fitting Bandit Beast® grinders

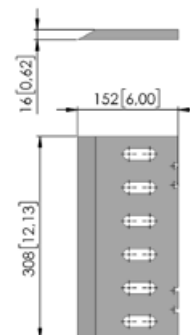
Wear resistant chipper steel, heat-treated, cutting edge sharpened

Standard version with 6 mounting holes

### Fits on models:

- Bandit Beast 3680®

weight per piece  
10.36 lbs (4.70 kg)



### Disclaimer:

BANDIT® and THE BEAST® are registered trademarks of Bandit Industries Inc. The parts shown are manufactured by King Kong and are not approved or endorsed by Bandit Industries Inc. for use in Bandit machines.



FOR BANDIT BEAST®



# KING KONG TOOLS FOR WOOD RECYCLING

FOR BANDIT  
BEAST®



## KHZ003-P

Tool holder of the new KingKong-Tools blade system for Bandit Beast® wood grinders

Holder made out of high quality steel

Standard version

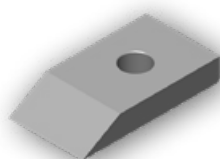
weight per piece  
12.41 lbs (5.64 kg)



Compatible hardware  
KSI112

### Fits on models:

- Bandit Beast 2680®, Bandit Beast 3680®



## KFM055

Replacement blade of the new KingKong-Tools blade system for Bandit Beast® wood grinders

Blade made out of high quality steel

Standard version



weight per piece  
0.57 lbs (0.26 kg)



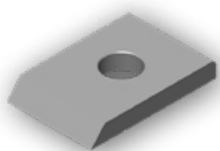
Compatible hardware  
KSI112

### Application recommendation:

- tree logs and stumps, hardwood, very aggressive cutting action

### Fits on models:

- Bandit Beast 2680®, Bandit Beast 3680®



## KFM056

Clamping wedge of the new KingKong-Tools blade system for Bandit Beast® wood grinders

Clamping wedge made out of high quality steel

Standard version



weight per piece  
0.57 lbs (0.26 kg)



Compatible hardware  
KSI112

### Application recommendation:

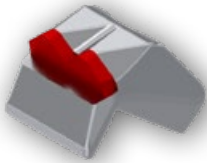
- tree logs and stumps, hardwood

### Fits on models:

- Bandit Beast 2680®, Bandit Beast 3680®



## KFZO44



Replacement tooth fitting the new KingKong-Tools blade system for Bandit Beast® wood grinders

Double shingle tooth with two solid tungsten carbide tips

Standard version



weight per piece  
2.23 lbs (1.01 kg)



### Application recommendation:

- shingle grinding, very abrasive applications

### Fits on models:

- Bandit Beast 2680®, Bandit Beast 3680®



## KSI112

Bolt

3/4" - 16 x 2 1/2" Grade 8

weight per piece  
0.44 lbs (0.20 kg)



## Your advantages with the KingKong-Tools blade system:

- individually replaceable blades and replacement teeth for fast tool replacement intervals
- blades made out of high quality and specifically hardened chipper knife steel
- very aggressive cutting action
- high quality KingGrit hardfacing on the tool holder

### Disclaimer:

BANDIT® and THE BEAST® are registered trademarks of Bandit Industries Inc. The parts shown are manufactured by King Kong and are not approved or endorsed by Bandit Industries Inc. for use in Bandit machines.



# KING KONG TOOLS FOR WOOD RECYCLING

FOR BANDIT  
BEAST®

## KFZ279-1



Replacement tooth fitting the King Kong Tools holder system for Bandit Beast® wood grinders

1" Cutter with solid tungsten carbide tip

Standard version



weight per piece  
1.01 lbs (0.46 kg)



Compatible hardware  
KSI100

### Application recommendation:

- tree logs and stumps, hardwood, green waste

### Fits on models:

- Bandit Beast 2680®, Bandit Beast 3680®, Bandit Beast 4680®

## KFZ278-1



Replacement tooth fitting the King Kong Tools holder system for Bandit Beast® wood grinders

Splitter with solid tungsten carbide tip

Standard version



weight per piece  
1.01 lbs (0.46 kg)



Compatible hardware  
KSI100

### Application recommendation:

- tree logs and stumps, hardwood, green waste

### Fits on models:

- Bandit Beast 2680®, Bandit Beast 3680®, Bandit Beast 4680®

## KFZ003-1



Replacement tooth fitting the King Kong Tools holder system for Bandit Beast® wood grinders

Shingle tooth with solid tungsten carbide tip

Standard version



weight per piece  
1.01 lbs (0.46 kg)



Compatible hardware  
KSI100

### Application recommendation:

- shingle grinding, very abrasive applications

### Fits on models:

- Bandit Beast 2680®, Bandit Beast 3680®, Bandit Beast 4680®



## KFZ035

Replacement tooth fitting the King Kong Tools holder system for Bandit Beast® wood grinders

Double Splitter with two solid tungsten carbide tips

Standard version



weight per piece  
1.30 lbs (0.59 kg)



Compatible hardware  
KSI100

### Application recommendation:

- tree logs and stumps, hardwood, green waste

### Fits on models:

- Bandit Beast 2680®, Bandit Beast 3680®, Bandit Beast 4680®



# KING KONG TOOLS FOR WOOD RECYCLING

FOR BANDIT  
BEAST®



## KFS411-1

Raker fitting the King Kong Tools holder system for  
Bandit Beast® wood grinders

Raker with solid tungsten carbide tip

Standard version



weight per piece  
1.23 lbs (0.56 kg)



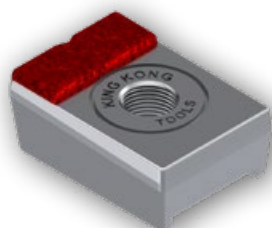
Compatible hardware  
KSI112

### Application recommendation:

- tree logs and stumps, hardwood, green waste

### Fits on models:

- Bandit Beast 2680®, Bandit Beast 3680®

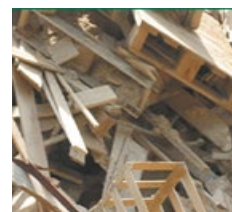


## KFS1025-P

Raker fitting the King Kong Tools holder system for  
Bandit Beast® wood grinders

Raker with KingGrit hardfacing

Impact resistant version



weight per piece  
1.23 lbs (0.56 kg)



Compatible hardware  
KSI112

### Application recommendation:

- waste wood, contaminated grinding material

### Fits on models:

- Bandit Beast 2680®, Bandit Beast 3680®



## KHZ31-1

Tool holder of the King Kong Tools holder system for  
Bandit Beast® wood grinders

Drop forged holder out of high quality steel

Standard version

### Fits on models:

- Bandit Beast 2680®, Bandit Beast 3680®

weight per piece  
13.77 lbs (6.26 kg)





## KHZ002

Tool holder of the King Kong Tools holder system for Bandit Beast® wood grinders

Drop forged holder out of high quality steel

Standard version

### Fits on models:

- Bandit Beast 4680®

weight per piece  
14.30 lbs (6.50 kg)



## KSI100

Tooth Bolt  
5/8" - 18 x 3" Grade 8

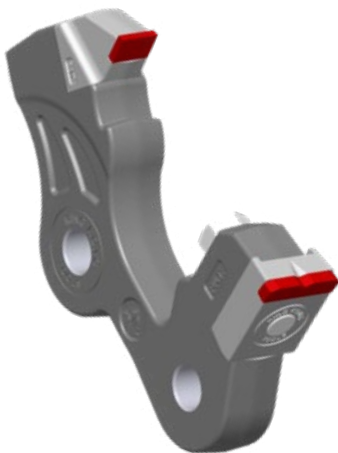
weight per piece  
0.35 lbs (0.16 kg)



## KSI112

Raker Bolt  
3/4" - 16 x 2 1/2" Grade 8

weight per piece  
0.44 lbs (0.20 kg)



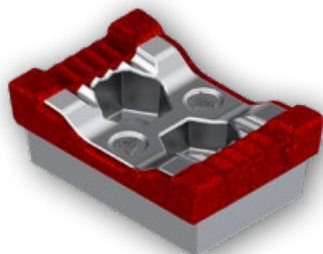
## Your advantages with the KingKong-Tools holder system:

- 90° contact surface keeps tooth from rotating
- heavy drop forged holder for extended tool life
- bolt from back keeps carbide tooth safely in place and provides quick and easy maintenance
- excellent holder protection due to extra wide teeth and rakers



# KING KONG TOOLS FOR WOOD RECYCLING

FOR DIAMOND Z



## KFS1069-PR



Replacement tooth fitting tub and horizontal grinders from Diamond Z

Tooth with innovative KingPact design and KingGrit hardfacing

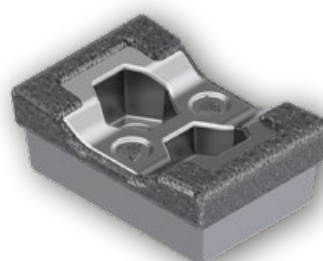
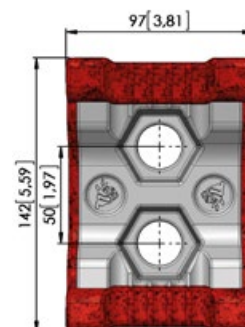
Standard version

weight per piece  
7.56 lbs (3.43 kg)



### Fits on Diamond Z models:

- BDZ 1136B, DZ 1248B, DZ 1352B, DZ1460B, DZ 1463B, E6000B, DZH7000



## KFS1135-PS



Replacement tooth fitting tub and horizontal grinders from Diamond Z

Tooth of the Silverstar product line with innovative KingPact design and KingGrit hardfacing

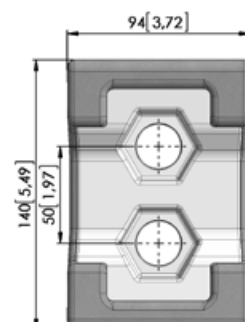
Severe duty version

weight per piece  
8.16 lbs (3.70 kg)



### Fits on Diamond Z models:

- BDZ 1136B, DZ 1248B, DZ 1352B, DZ1460B, DZ 1463B, E6000B, DZH7000



## KSI213

Bolt  
7/8"-9 x 5" YZ8 HCS

weight per piece  
1.10 lbs (0.50 kg)





FOR DIAMOND Z



# KING KONG TOOLS FOR WOOD RECYCLING

FOR DOPPSTADT  
HIGH SPEED



## KFS1310-P



Replacement tooth for Doppstadt high speed grinders of the new AK grinder series

Tooth with wear resistant KingGrit hardfacing

Impact resistant version



weight per piece  
7.19 lbs (3.26 kg)



Compatible hardware  
KSI104, KSI128, KSI134

### Application recommendation:

- wood waste, contaminated grinding material

### Fits on models:

- Doppstadt AK 310, AK 510, AK 560, AK 635, AK 440, AK540, AK 640, NZ 180



## KFS1311

Replacement tooth for Doppstadt high speed grinders of the new AK grinder series

Tooth with five tungsten carbide tips

Standard version



weight per piece  
6.64 lbs (3.02 kg)



Compatible hardware  
KSI104, KSI128, KSI134

### Application recommendation:

- logs, stumps, for light and medium applications

### Fits on models:

- Doppstadt AK 310, AK 510, AK 560, AK 635, AK 440, AK540, AK 640, NZ 180



## KFS1312

Replacement tooth for Doppstadt high speed grinders of the new AK grinder series

Tooth with five heavy duty tungsten carbide tips for a very long tool life

Premium version



weight per piece  
6.81 lbs (3.09 kg)



Compatible hardware  
KSI104, KSI128, KSI134

### Application recommendation:

- logs, stumps, abrasive applications

### Fits on models:

- Doppstadt AK 310, AK 510, AK 560, AK 635, AK 440, AK540, AK 640, NZ 180



## KHS1020

Tool holder for Doppstadt high speed grinders of the new AK grinder series

Holder made out of wear resistant steel designed to fit a 60mm shaft

Standard version

weight per piece  
23.68 lbs (10.74 kg)

### Application recommendation:

- for all wood grinding applications recommended

### Fits on models:

- Doppstadt AK 310, AK 510, AK 560, AK 635, AK 440, AK540, AK 640, NZ 180



## KSI104

Bolt  
M22x1,5x140mm -10.9 DIN960

weight per piece  
1.10 lbs (0.50 kg)



## KSI128

Nut / Lock nut  
M22x1,5 - 10.9 DIN980

weight per piece  
0.11 lbs (0.05 kg)



## KSI134

Washer, curved  
M22 Fdst DIN6796

weight per piece  
0.04 lbs (0.02 kg)



# KING KONG TOOLS FOR WOOD RECYCLING

FOR DOPPSTADT  
HIGH SPEED



## KFS462-PR



Replacement tooth for Doppstadt high speed grinders of the AK grinder series

Tooth with wear resistant KingGrit hardfacing

Impact resistant version



weight per piece  
7.05 lbs (3.20 kg)



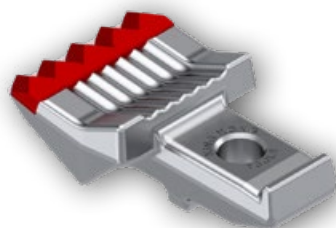
Compatible hardware  
KSI104, KSI128, KSI134

### Application recommendation:

- wood waste, contaminated grinding material

### Fits on models:

- Doppstadt AK 310, AK 510, AK 560, AK 635, AK 440, AK540, AK 640, NZ 180



## KFS460-2

Replacement tooth for Doppstadt high speed grinders of the AK grinder series

Tooth with five heavy duty tungsten carbide tips for a very long tool life

Premium version



weight per piece  
6.42 lbs (2.91 kg)



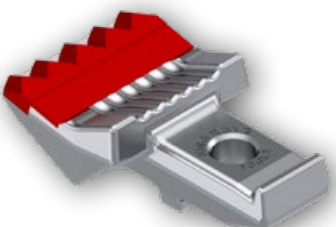
Compatible hardware  
KSI104, KSI128, KSI134

### Application recommendation:

- logs, stumps, abrasive applications

### Fits on models:

- Doppstadt AK 310, AK 510, AK 560, AK 635, AK 440, AK540, AK 640, NZ 180



## KFS461-2

Replacement tooth for Doppstadt high speed grinders of the AK grinder series

Tooth with five tungsten carbide tips and additional carbide row below for maximum wear resistance

Heavy duty version



weight per piece  
6.49 lbs (2.95 kg)



Compatible hardware  
KSI104, KSI128, KSI134

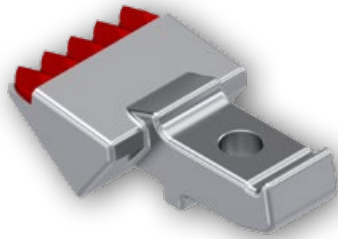
### Application recommendation:

- composting, sandy material, used on the outer positions of the rotor

### Fits on models:

- Doppstadt AK 310, AK 510, AK 560, AK 635, AK 440, AK540, AK 640, NZ 180





## KFS1140

Replacement tooth for Doppstadt high speed grinders of the AK grinder series

Tooth with five tungsten carbide tips for a very long tool life

Standard version



weight per piece  
7.17 lbs (3.26 kg)



Compatible hardware  
KSI104, KSI128, KSI134

### Application recommendation:

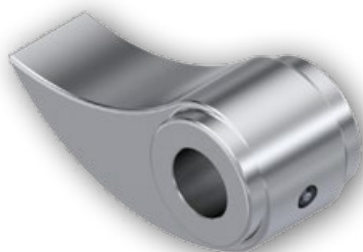
- logs, stumps, for light and medium applications

### Fits on models:

- Doppstadt AK 310, AK 510, AK 560, AK 635, AK 440, AK540, AK 640, NZ 180

# KING KONG TOOLS FOR WOOD RECYCLING

FOR DOPPSTADT  
HIGH SPEED



## KFS1051

One-piece replacement hammer for Doppstadt high speed grinders of the AK grinder series

Hammer made out of wear resistant steel

Standard version

weight per piece  
22.55 lbs (10.25 kg)

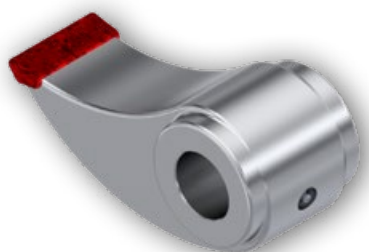
Compatible insert shaft  
KAS01

### Application recommendation:

- wood waste, highly contaminated material

### Fits on models:

- Doppstadt AK 310, AK 510, AK 560, AK 635, AK 440, AK540, AK 640, NZ 180



## KFS1051-P

One-piece replacement hammer for Doppstadt high speed grinders of the AK grinder series

Hammer with wear-resistant KingGrit hardfacing

Impact resistant version

weight per piece  
22.55 lbs (10.25 kg)

Compatible insert shaft  
KAS01

### Application recommendation:

- wood waste, highly contaminated material

### Fits on models:

- Doppstadt AK 310, AK 510, AK 560, AK 635, AK 440, AK540, AK 640, NZ 180



## KFS466

Clamping wedge for Doppstadt high speed grinders of the AK grinder series

Wedge made out of wear resistant steel

Extra-wide version for additional holder protection

weight per piece  
2.67 lbs (1.21 kg)



### Application recommendation:

- for all wood grinding applications recommended

### Fits on models:

- Doppstadt AK 310, AK 510, AK 560, AK 635, AK 440, AK540, AK 640, NZ 180



## KFS1030



Clamping wedge for Doppstadt high speed grinders of the AK grinder series

Wedge made out of wear resistant steel

Standard version

### Application recommendation:

- for all wood grinding applications recommended

### Fits on models:

- Doppstadt AK 310, AK 510, AK 560, AK 635, AK 440, AK540, AK 640, NZ 180

weight per piece  
1.65 lbs (0.75 kg)



## KHS1005



Tool holder for Doppstadt high speed grinders of the AK grinder series

Holder made out of wear resistant steel

Standard version

### Application recommendation:

- for all wood grinding applications recommended

### Fits on models:

- Doppstadt AK 310, AK 510, AK 560, AK 635, AK 440, AK540, AK 640, NZ 180

weight per piece  
23.15 lbs (10.50 kg)

## KHS1005-P-L



Tool holder for Doppstadt high speed grinders of the AK grinder series

Holder made out of wear resistant steel

Special version with KingShield hardfacing left

### Application recommendation:

- used on the outer positions of the rotor

### Fits on models:

- Doppstadt AK 310, AK 510, AK 560, AK 635, AK 440, AK540, AK 640, NZ 180

weight per piece  
24.20 lbs (11.00 kg)





## KHS1005-P-R

Tool holder for Doppstadt high speed grinders of the AK grinder series

Holder made out of wear resistant steel

Special version with KingShield hardfacing right

weight per piece  
24.20 lbs (11.00 kg)

### Application recommendation:

- used on the outer positions of the rotor

### Fits on models:

- Doppstadt AK 310, AK 510, AK 560, AK 635, AK 440, AK540, AK 640, NZ 180



## KAS01

Insert shaft for Doppstadt high speed grinders of the AK grinder series

Insert shaft made out of wear resistant steel

Standard version

weight per piece  
57.76 lbs (26.20 kg)

### Application recommendation:

- fitting tool holder KHS1005 as well as replacement hammers KFS1051 and KFS1051-P

Shaft diameter: 50 mm  
Length: 1730 mm



## KFZ008-P

Ripper tooth fitting Doppstadt AK230 high speed grinders

Tooth made out of wear resistant steel

Version with additional KingShield hardfacing for extended wear protection

weight per piece  
5.06 lbs (2,30 kg)









### Application recommendation:

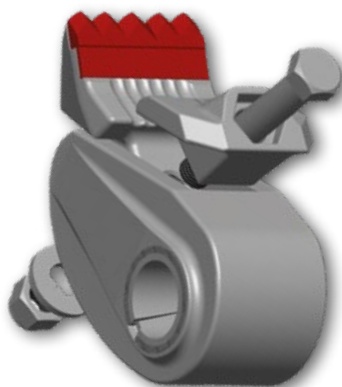
- for all wood grinding applications recommended

### Fits on models:

- Doppstadt AK 230



	<b>KSI104</b> Bolt M22x1,5x140mm -10.9 DIN960	weight per piece 1.12 lbs (0.51 kg)	
	<b>KSI128</b> Nut / Lock nut M22x1,5 - 10.9 DIN980	weight per piece 0.15 lbs (0.07 kg)	
	<b>KSI134</b> Washer, curved M22 Fdst DIN6796	weight per piece 0.13 lbs (0.06 kg)	
	<b>KSI206</b> Bolt M22x1,5x100mm -10.9 DIN960	weight per piece 0.88 lbs (0.40 kg)	



### Your advantages with KingKong-Tools:

- perfectly rigid system with extra wide support surface
- extra-wide clamping wedge for reduced holder wear
- high material output due to aggressive cutting angle
- different tooth options to match your application

# KING KONG TOOLS FOR WOOD RECYCLING

FOR DOPPSTADT  
SLOW SPEED



## KFS1060

Replacement tooth for the King Kong Tools holder system fitting on Doppstadt slow speed shredders

Replacement tooth made out of wear resistant steel

Standard version



weight per piece  
10.34 lbs (4.70 kg)



Compatible hardware  
KSI104, KSI128, KSI134

### Application recommendation:

- wood waste, contaminated grinding material

### Fits on models:

- Doppstadt DW2060, DW2560, DW3060



## KFS1060-P

Replacement tooth for the King Kong Tools holder system fitting on Doppstadt slow speed shredders

Replacement tooth made out of wear resistant steel

Severe duty version (KingShield hardfacing)



weight per piece  
10.34 lbs (4.70 kg)



Compatible hardware  
KSI104, KSI128, KSI134

### Application recommendation:

- wood waste, highly contaminated grinding material

### Fits on models:

- Doppstadt DW2060, DW2560, DW3060

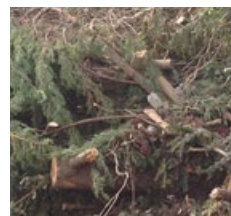


## KFS1256

Replacement tooth for the King Kong Tools holder system fitting on Doppstadt slow speed shredders

Replacement tooth made out of wear resistant steel with sharp cutting edge

Aggressive version



weight per piece  
10.23 lbs (4.64 kg)



Compatible hardware  
KSI104, KSI128, KSI134

### Application recommendation:

- wood waste, green waste, stumps; best choice if aggressive cutting action is needed

### Fits on models:

- Doppstadt DW





## KHS1011

Tool holder of the KingKong-Tools holder system fitting on Doppstadt slow speed shredders of the DW series

Holder made out of wear resistant steel

Standard version

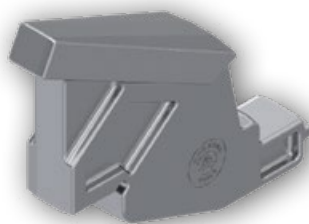
weight per piece  
23.32 lbs (10.60 kg)

### Application recommendation:

- for all wood grinding applications recommended, only compatible with replacement teeth KFS1060, KFS1060-P

### Fits on models:

- Doppstadt DW2060, DW2560, DW3060



## KFS1093

Comb tooth fitting on Doppstadt slow speed shredders of the DW series

Comb tooth made out of wear resistant steel

Standard version, ready for individual hardfacing

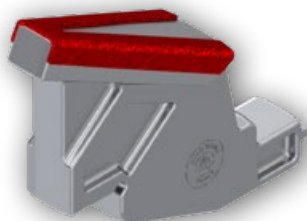
weight per piece  
45.54 lbs (20.70 kg)

### Application recommendation:

- for all wood grinding applications recommended

### Fits on models:

- Doppstadt DW2060, DW2560, DW3060



## KFS1093-P

Comb tooth fitting on Doppstadt slow speed shredders of the DW series

Comb tooth made out of wear resistant steel

Severe duty version with KingGrit hardfacing

weight per piece  
46.64 lbs (21.20 kg)

### Application recommendation:







- for all wood grinding applications recommended

### Fits on models:

- Doppstadt DW2060, DW2560, DW3060

# KING KONG TOOLS FOR WOOD RECYCLING

FOR DOPPSTADT  
SLOW SPEED

	<b>KSI104</b> Bolt M22x1,5x140mm -10.9 DIN960	weight per piece 1.10 lbs (0.50 kg)	
	<b>KSI128</b> Nut / Lock nut M22x1,5 - 10.9 DIN980	weight per piece 0.11 lbs (0.05 kg)	
	<b>KSI134</b> Washer, curved M22 Fdst DIN6796	weight per piece 0.04 lbs (0.02 kg)	



### Your advantages with KingKong-Tools:

---

- increased interlocking contact surface for superior rigidity
- perfect alignment and centering by prism railing
- impact deflected into rotor by slanted contact surface
- easy assembly
- highly wear-resistant forged components
- hardware (bolt, nut, washer) same as for high speed grinders



# KING KONG TOOLS FOR WOOD RECYCLING

FOR DOPPSTADT  
SLOW SPEED



## KFS1147-1

Replacement tooth for the conventional holder system fitting on Doppstadt slow speed shredders

Replacement tooth made out of wear resistant steel

Standard version



weight per piece  
9.75 lbs (4.43 kg)



Compatible hardware  
KSI104, KSI128, KSI134

### Application recommendation:

- residential and commercial waste, contaminated grinding material

### Fits on models:

- Doppstadt DW



## KFS1147-1-P

Replacement tooth for the conventional holder system fitting on Doppstadt slow speed shredders

Replacement tooth made out of wear resistant steel with additional KingGrit hardfacing

Severe duty version



weight per piece  
9.90 lbs (4.50 kg)



Compatible hardware  
KSI104, KSI128, KSI134

### Application recommendation:

- residential and commercial waste, highly contaminated grinding material

### Fits on models:

- Doppstadt DW

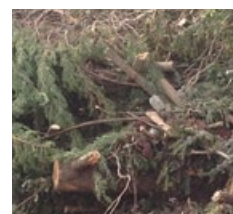


## KFS1183

Replacement tooth for the conventional holder system fitting on Doppstadt slow speed shredders

Replacement tooth made out of wear resistant steel with sharp cutting edge

Aggressive version



weight per piece  
8.80 lbs (4.00 kg)



Compatible hardware  
KSI104, KSI128, KSI134

### Application recommendation:

- wood waste, green waste, stumps; best choice if aggressive cutting action is needed

### Fits on models:

- Doppstadt DW



## KFS1147-1L

Lateral replacement tooth for the conventional holder system fitting on Doppstadt slow speed shredders

Replacement tooth made out of wear resistant steel with machined body

Left machined version for motor side



weight per piece  
9.75 lbs (4.43 kg)



Compatible hardware  
KSI104, KSI128, KSI134

### Application recommendation:

- residential and commercial waste, used on the outer positions of the rotor

### Fits on models:

- Doppstadt DW



## KFS1147-1R

Lateral replacement tooth for the conventional holder system fitting on Doppstadt slow speed shredders

Replacement tooth made out of wear resistant steel with machined body

Right machined version for rear side



weight per piece  
9.75 lbs (4.43 kg)



Compatible hardware  
KSI104, KSI128, KSI134

### Application recommendation:

- residential and commercial waste, used on the outer positions of the rotor

### Fits on models:

- Doppstadt DW



## KHS1021

Tool holder for the conventional holder system fitting on Doppstadt slow speed shredders of the DW series

Holder made out of wear resistant steel

Standard version

### Application recommendation:

- for all wood grinding applications recommended

### Fits on models:

- Doppstadt DW2060, DW2560, DW3060

weight per piece  
21.91 lbs (9.94 kg)

# KING KONG TOOLS FOR WOOD RECYCLING

FOR EGGERSMANN

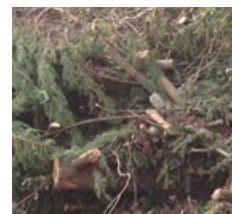


## KFS1360

Replacement tooth fitting on Eggersmann slow speed shredders

Replacement tooth made out of wear resistant steel

Standard version



weight per piece  
10.58 lbs (4.80 kg)



### Application recommendation:

- wood waste, green waste, stumps

### Fits on models:

- Eggersmann Teuton



## KFS1360-P

Replacement tooth fitting on Eggersmann slow speed shredders

Replacement tooth made out of wear resistant steel with additional KingGrit hardfacing

Severe duty version



weight per piece  
10.74 lbs (4.87 kg)

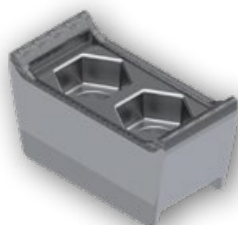


### Application recommendation:

- residential and commercial waste, contaminated grinding material

### Fits on models:

- Eggersmann Teuton



## KFS1399-P

Replacement tooth fitting on Eggersmann slow speed shredders

Replacement tooth made out of wear resistant steel with additional KingShield hardfacing

Reversible severe duty version



weight per piece  
4.94 lbs (2.24 kg)



### Application recommendation:

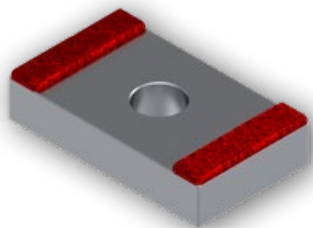
- residential and commercial waste, contaminated grinding material, Tires

### Fits on models:

- Eggersmann Teuton







### **KFS1080-P**

Replacement tooth fitting Hammel secondary shredders

Tooth with KingGrit cutting edges

Reversible, impact resistant version



weight per piece  
2.12 lbs (0.96 kg)



#### **Application recommendation:**

- waste wood, contaminated material

#### **Fits on models:**

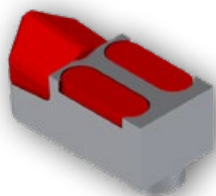
- Hammel NZS 700, NZS 1000



# KING KONG TOOLS FOR WOOD RECYCLING

FOR HAYBUSTER /  
DURATECH

## KFS142



Replacement tooth fitting Haybuster / Duratech grinders with fixed tools

Tooth with solid tungsten carbide wear protection

Standard version



weight per piece  
1.90 lbs (0.86 kg)



Compatible hardware  
SI128, SI129

### Application recommendation:

- green waste, compost, tree logs / tree stumps

## KFS1172-2



Replacement tooth fitting Haybuster / Duratech grinders with fixed tools

Tooth with solid tungsten carbide tips (2 carbides)

Standard version



weight per piece  
1.76 lbs (0.80 kg)



Compatible hardware  
SI128, SI129

### Application recommendation:

- green waste, compost, tree logs / tree stumps

## SI128



Bolt  
M16x1.5x70-10.9 DIN960

weight per piece  
0.29 lbs (0.13 kg)



## SI129



Bolt  
M16x1.5x90-10.9 DIN960

weight per piece  
0.35 lbs (0.16 kg)





## KFS1170

Replacement hammer fitting Haybuster / Duratech grinders with free swinging tools

Hammer with tungsten carbide wear protection

Severe duty version

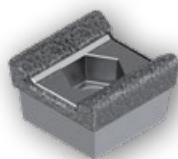


weight per piece  
7.19 lbs (3.27 kg)



### Application recommendation:

- waste wood, contaminated grinding material



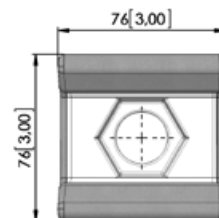
## KFS1219-PS



Replacement tooth fitting tub and horizontal grinders from Haybuster / Duratech

Tooth of the Silverstar product line with KingGrit hardfacing

Severe duty version



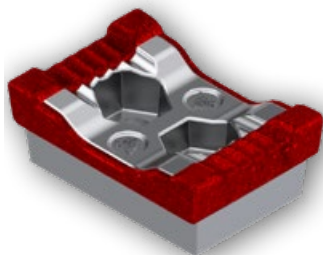
weight per piece  
2.49 lbs (1.13 kg)





# KING KONG TOOLS FOR WOOD RECYCLING

FOR HOGZILLA



## KFS1069-PR



Replacement tooth fitting tub and horizontal grinders from Hogzilla

Tooth with innovative KingPact design and KingGrit hardfacing

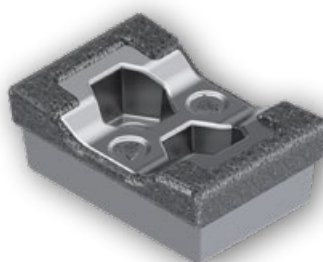
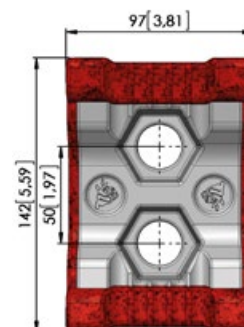
Standard version

weight per piece  
7.56 lbs (3.43 kg)



### Application recommendation:

- green waste; for most wood grinding applications recommended



## KFS1135-PS



Replacement tooth fitting tub and horizontal grinders from Hogzilla

Tooth of the Silverstar product line with innovative KingPact design and KingGrit hardfacing

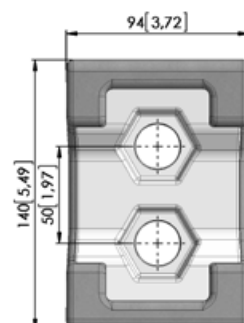
Severe duty version

weight per piece  
8.16 lbs (3.70 kg)



### Application recommendation:

- for power users; very abrasive and demanding applications





Benefit from our innovative **KingPact** grinder tip design and maximize the performance and tool life of your grinder tips. The reinforced corners and our highest quality **KingGrit** carbide hardfacing optimize the performance of your grinding operation and save you money!

Added steel volume in corners  
**consistently high cutting performance**

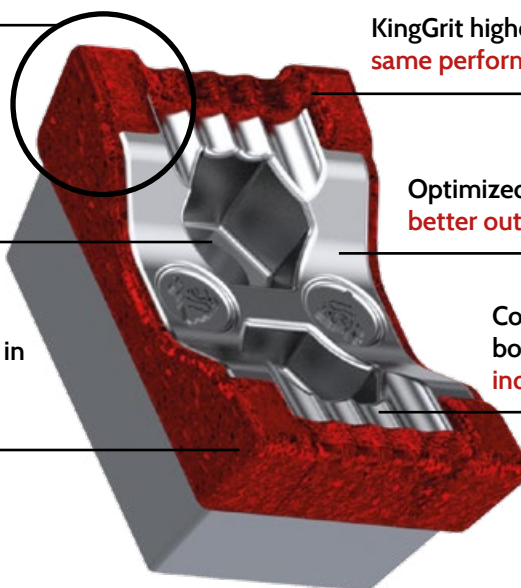
KingGrit highest quality virgin carbide grit  
**same performance for every batch**

Deep bolt holes  
**easier tooth removal**

Optimized and aggressive cutting angle  
**better output material**

Maximum thickness of hardfacing in  
areas with highest wear  
**longer tool life**

Corrugated surface on the  
body for optimized material flow  
**increased performance and output**



# KING KONG TOOLS FOR WOOD RECYCLING

FOR HUSMANN



## KFS1098

Replacement tooth fitting Husmann grinders

Tooth with solid tungsten carbide tips (4 carbides)

Standard version

### Application recommendation:

- green waste, tree logs and stumps, compost



weight per piece  
5.72 lbs (2.60 kg)



Compatible hardware  
SIO8, KSI137, KSI110



## KFS1120-P

Replacement tooth fitting Husmann grinders

Tooth with KingGrit hardfacing

Impact resistant version

### Application recommendation:

- waste wood, highly contaminated material



weight per piece  
5.72 lbs (2.60 kg)



Compatible hardware  
SIO8, KSI137, KSI110



## SIO8

Bolt  
M20x1,5x100mm -10.9 DIN960

weight per piece  
0.66 lbs (0.30 kg)



## KSI137

Nut  
M20x1,5 - 10.9 DIN980

weight per piece  
0.09 lbs (0.04 kg)



## KSI110

Washer  
M20 Schnorr-washer

weight per piece  
0.04 lbs (0.02 kg)





## KFS1129

Replacement tooth fitting Husmann grinders

Tooth with four embedded tungsten carbide tips

Standard version



weight per piece  
3.35 lbs (1.52 kg)



### Application recommendation:

- green waste, tree logs and stumps, compost

### Fits on models:

- Husmann HGF 4



## KSI181

Bolt HFG 4

M16x80-12.9 DIN912

weight per piece  
0.35 lbs (0.16 kg)



## KSI111

Washer

M16 Schnorr washer

weight per piece  
0.02 lbs (0.01 kg)





# KING KONG TOOLS FOR WOOD RECYCLING

FOR JENZ



## KFS532

Replacement tooth fitting Jenz grinders of the AZ series

Tooth with solid tungsten carbide tip (4 carbide tips)

Standard version



weight per piece  
4.40 lbs (2.00 kg)



Compatible hardware  
SI11G

### Application recommendation:

- green waste, tree logs and stumps

### Fits on models:

- Jenz AZ 460 E



## KFS513-1-P

Replacement tooth fitting Jenz grinders of the AZ series

Tooth with KingGrit hardfacing

Impact resistant version



weight per piece  
4.62 lbs (2.10 kg)



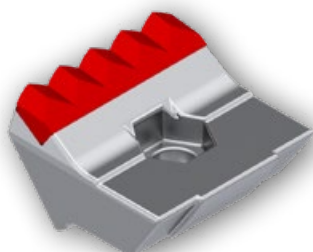
Compatible hardware  
SI11G

### Application recommendation:

- wood waste, contaminated material

### Fits on models:

- Jenz AZ 460 E



## KFS1163

Replacement tooth fitting Jenz grinders of the BA series

Tooth with solid tungsten carbide tip (5 carbide tips)

Standard version



weight per piece  
5.50 lbs (2.50 kg)



Compatible hardware  
KSI173

### Application recommendation:

- green waste, tree logs and stumps

### Fits on models:

- Jenz BA 615, BA 725, BA 915, BA 965



## KFS1164-P



Replacement tooth fitting Jenz grinders of the BA series

Tooth with KingGrit hardfacing

Impact resistant version



weight per piece  
5.52 lbs (2.51 kg)



Compatible hardware  
KSI173

### Application recommendation:

- wood waste, contaminated material

### Fits on models:

- Jenz BA 615, BA 725, BA 915, BA 965

## KFS1107



Clamping block with 100mm width fitting Jenz grinders of the BA series

Block made out of high quality steel

Standard version

weight per piece  
3.52 lbs (1.60 kg)





### KFS1023

Wedge with 80mm width fitting Jenz grinders of the AZ series

Wedge made out of high quality steel

Standard version

weight per piece  
2.64 lbs (1.20 kg)



Compatible hardware  
SI11G

#### Application recommendation:

- green waste, tree logs and stumps

#### Fits on models:

- Jenz AZ 460 E



### KFS1023-P

Wedge with 80mm width fitting Jenz grinders of the AZ series

Wedge made out of high quality steel with additional KingGrit hardfacing for extended wear protection

Severe duty version

weight per piece  
2.86 lbs (1.30 kg)



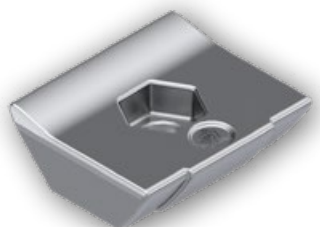
Compatible hardware  
SI11G

#### Application recommendation:

- compost, extremely abrasive applications

#### Fits on models:

- Jenz AZ 460 E



### KFS1086

Wedge with 100mm width fitting Jenz grinders of the AZ and BA series

Wedge made out of high quality steel

Standard version

weight per piece  
3.52 lbs (1.60 kg)

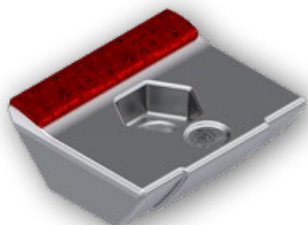


#### Application recommendation:

- green waste, tree logs and stumps

#### Fits on models:

- Jenz BA 615, BA 725, BA 915, BA 965



## KFS1086-P

Wedge with 100mm width fitting Jenz grinders of the AZ and BA series

Wedge made out of high quality steel with additional KingGrit hardfacing for extended wear protection

Severe duty version

weight per piece  
3.74 lbs (1.70 kg)



### Application recommendation:

- waste wood, contaminated material

### Fits on models:

- Jenz BA 615, BA 725, BA 915, BA 965



## KHS1013

Tool holder fitting Jenz grinders of the AZ series

Holder made out of high quality steel, fitting a Ø35mm insert shaft with a total width of 80mm

Standard version

weight per piece  
13.60 lbs (6.18 kg)



### Compatible insert shaft:

- KAS03





### KFS1108

Replacement hammer fitting Jenz grinders of the AZ & BA series

Hammer made out of high quality steel, fitting a Ø50mm insert shaft with a total width of 80mm

Standard version

weight per piece  
20.35 lbs (9.25 kg)

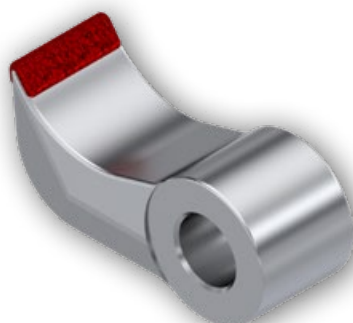
Compatible insert shaft:  
KAS02

#### Application recommendation:

- waste wood, highly contaminated material

#### Fits on models:

- Jenz BA 615, BA 725, BA 915, BA 965



### KFS1108-P

Replacement hammer fitting Jenz grinders of the AZ & BA series

Hammer with KingGrit hardfacing, fitting a Ø50mm insert shaft with a total width of 80mm

Severe duty version

weight per piece  
20.35 lbs (9.25 kg)

Compatible insert shaft:  
KAS02

#### Application recommendation:

- waste wood, highly contaminated material

#### Fits on models:

- Jenz BA 615, BA 725, BA 915, BA 965



### KAS03



weight per piece  
24.95 lbs (11.34 kg)

Insert shaft fitting Jenz grinders of the AZ series

Shaft made out of high quality steel

Standard version

shaft diameter: 35 mm  
length: 1555 mm

Compatible to the following holders and hammers:

- KHS1013 holder system
- KFS1095

### KAS02



weight per piece  
27.50 lbs (12.50 kg)

Insert shaft fitting Jenz grinders of the BA series

Shaft made out of high quality steel

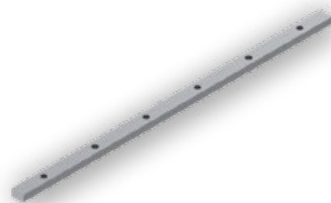
Standard version

shaft diameter: 50 mm  
length: 1555 mm

Compatible to the following holders and hammers:

- KFS1108 / KFS1108-P

### KFM060



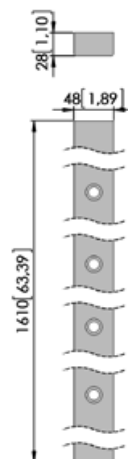
weight per piece  
36.46 lbs (16.54 kg)

Counter knife fitting Jenz grinders

Made out of wear and break resistant chipper knife steel

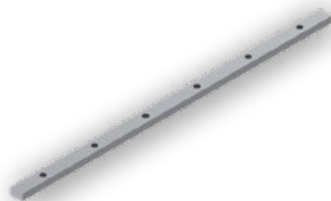
Dimensions:

- 1610x48x28 mm
- with 8 mounting holes





## KFM088



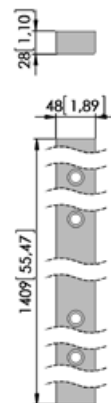
Counter knife fitting Jenz grinders

Made out of wear and break resistant chipper knife steel

### Dimensions:

- 1409x48x28 mm
- with 7 mounting holes

weight per piece  
31.90 lbs (14.47 kg)



## SI11G

Bolt  
M20x1,5x80mm -10.9 DIN960

weight per piece  
0.57 lbs (0.26 kg)



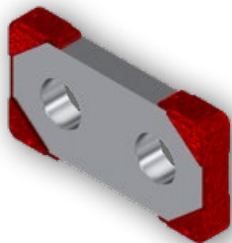
## KSI173

Bolt for KFS1163 / KFS1164-P  
M20x1,5x130mm

weight per piece  
0.84 lbs (0.38 kg)







## KFS1359

Replacement tooth fitting Mighty Giant tub grinders  
from Jones Manufacturing

Tooth with KingGrit cutting edges

Reversible, impact resistant version

---

### Application recommendation:

- green waste, waste wood, contaminated material

weight per piece  
3.28 lbs (1.49 kg)





# KING KONG TOOLS FOR WOOD RECYCLING

FOR KOMPTECH

## KRZ008



Replacement tooth fitting Komptech shredders of the Crambo series

Replacement tooth made out of wear resistant steel

Standard version planing tooth



weight per piece  
3.97 lbs (1.80 kg)



Compatible hardware  
KSI187

### Application recommendation:

- residential and commercial waste, contaminated grinding material

### Fits on models:

- Crambo 3400, 5000, 6000, 4200 direct, 5200 direct, 6200 direct

## KRZ009



Replacement tooth fitting Komptech shredders of the Crambo series

Replacement tooth made out of wear resistant steel

Right standard version sickle tooth



weight per piece  
3.79 lbs (1.72 kg)



Compatible hardware  
KSI187

### Application recommendation:

- residential and commercial waste, contaminated grinding material

### Fits on models:

- Crambo 3400, 5000, 6000, 4200 direct, 5200 direct, 6200 direct

## KRZ010



Replacement tooth fitting Komptech shredders of the Crambo series

Replacement tooth made out of wear resistant steel

Left standard version sickle tooth



weight per piece  
3.79 lbs (1.72 kg)



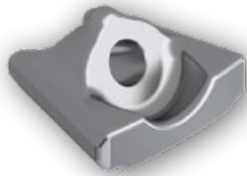
Compatible hardware  
KSI187

### Application recommendation:

- residential and commercial waste, contaminated grinding material

### Fits on models:

- Crambo 3400, 5000, 6000, 4200 direct, 5200 direct, 6200 direct



## KHZ011

Tool holder fitting Komptech shredders of the Crambo series

Holder made out of wear resistant steel

Standard version

---

**Compatible replacement teeth:**

- KRZ008, KRZ009, KRZ010

weight per piece  
1.26 lbs (0.57 kg)





### KFM094



Bio counter-cut tooth fitting Komptech shredders of the Crambo series

Counter-cut tooth made out of wear resistant steel

Standard version

weight per piece  
5.05 lbs (2.29 kg)



#### Application recommendation:

- residential and commercial waste, contaminated grinding material

#### Fits on models:

- Crambo 3400, 5000, 6000, 4200 direct, 5200 direct, 6200 direct

### KFS1196



Bio counter-cut tooth fitting Komptech shredders of the Crambo series

Counter-cut tooth made out of wear resistant steel with additional KingShield hardfacing for extended wear protection

Severe duty version

weight per piece  
5.07 lbs (2.30 kg)



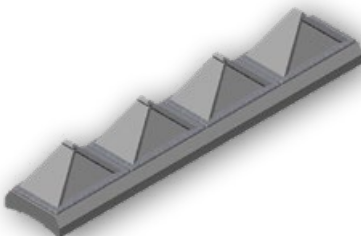
#### Application recommendation:

- residential and commercial waste, contaminated grinding material

#### Fits on models:

- Crambo 3400, 5000, 6000, 4200 direct, 5200 direct, 6200 direct

### KFM096



Cutting / counterblow bar fitting Komptech shredders of the Crambo series

Counterblow bar made out of wear resistant steel with additional KingShield hardfacing for extended wear protection

Severe duty version

weight per piece  
61.73 lbs (28.00 kg)

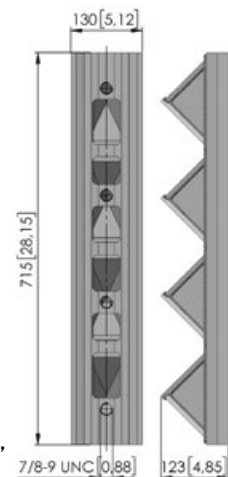


#### Application recommendation:

- residential and commercial waste

#### Fits on models:

- Crambo 3400, 5000, 6000, 4200 direct, 5200 direct, 6200 direct





### KSI187

Bolt for Komptech Crambo tools  
M20x70, 10.9 (kl. 6 kt.)

weight per piece  
0.35 lbs (0.16 kg)



### KFS1401-P

Replacement tooth fitting Komptech shredders of the Terminator series

Replacement tooth made out of wear resistant steel with additional hardfacing

Impact resistant version



weight per piece  
5.58 lbs (2.53 kg)



#### Application recommendation:

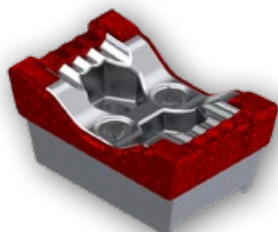
- wood waste, residential and commercial waste, contaminated grinding material

#### Fits on models:

- Terminator 6000

# KING KONG TOOLS FOR WOOD RECYCLING

FOR MORBARK



## KFS1068-PR



Replacement tooth fitting tub and horizontal grinders from Morbark

Tooth with innovative KingPact design and KingGrit hardfacing

Standard version with saddleback

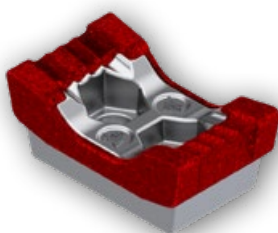
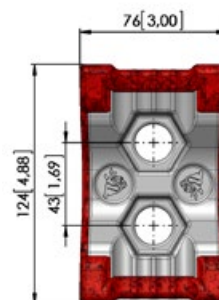
weight per piece  
5.28 lbs (2.40 kg)



Compatible hardware:  
KSI132, KSI133

### Fits on models:

- Morbark 1250, Morbark 1200XL, Morbark 1300, Morbark 3800, Morbark 3800XL, Morbark 4600XL



## KFS1116-PR



Replacement tooth fitting tub and horizontal grinders from Morbark

Tooth with innovative KingPact design and KingGrit hardfacing

Standard version

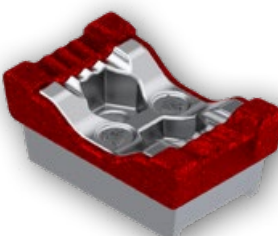
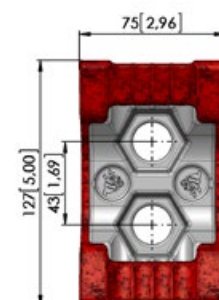
weight per piece  
4.84 lbs (2.20 kg)



Compatible hardware:  
KSI132, KSI133

### Fits on models:

- Morbark 1250, Morbark 1200XL, Morbark 1300, Morbark 3800, Morbark 3800XL, Morbark 4600XL



## KFS1145-PR



Replacement tooth fitting tub and horizontal grinders from Morbark

Tooth with innovative KingPact design and KingGrit hardfacing

Long version with saddleback

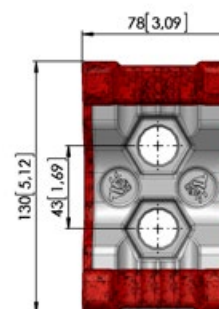
weight per piece  
5.09 lbs (2.31 kg)



Compatible hardware:  
KSI132, KSI133

### Fits on models:

- Morbark 1250, Morbark 1200XL, Morbark 1300, Morbark 3800, Morbark 3800XL, Morbark 4600XL





## KFS1189-PR



Replacement tooth fitting tub and horizontal grinders from Morbark

Tooth with innovative KingPact design and KingGrit hardfacing

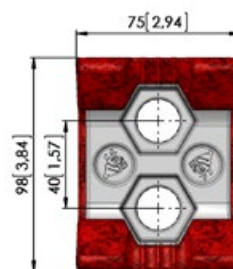
Standard version with saddleback

weight per piece  
3.17 lbs (1.44 kg)



### Fits on models:

- Morbark 1200, Morbark 1100



## KFS1099-P



Replacement tooth fitting tub and horizontal grinders from Morbark

Tooth with innovative KingPact design and KingGrit hardfacing

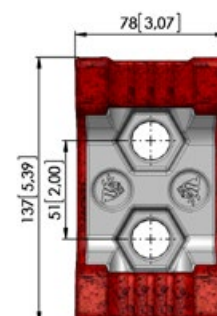
Standard version with saddleback

weight per piece  
5.65 lbs (2.57 kg)

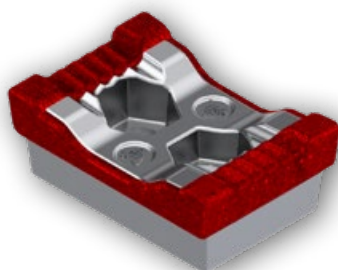


### Fits on models:

- Morbark 1400, Morbark 1500



## KFS1069-PR



Replacement tooth fitting tub and horizontal grinders from Morbark

Tooth with innovative KingPact design and KingGrit hardfacing

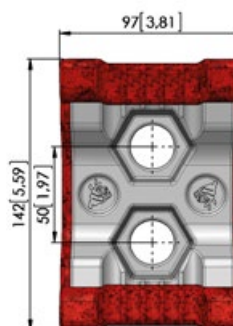
Standard version

weight per piece  
7.56 lbs (3.43 kg)



### Fits on models:

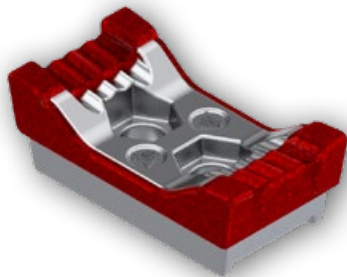
- Morbark 5600





# KING KONG TOOLS FOR WOOD RECYCLING

FOR MORBARK



## KFS1085-PR



Replacement tooth fitting tub and horizontal grinders from Morbark

Tooth with innovative KingPact design and KingGrit hardfacing

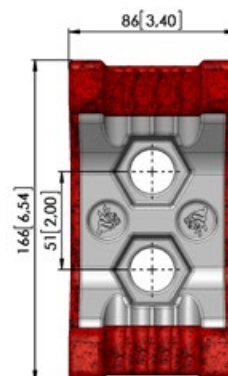
Standard version with saddleback

weight per piece  
7.72 lbs (3.50 kg)



### Fits on models:

- Morbark 6600, Morbark 1600





Benefit from our innovative **KingPact** grinder tip design and maximize the performance and tool life of your grinder tips. The reinforced corners and our highest quality **KingGrit** carbide hardfacing optimize the performance of your grinding operation and save you money!

Added steel volume in corners  
**consistently high cutting performance**

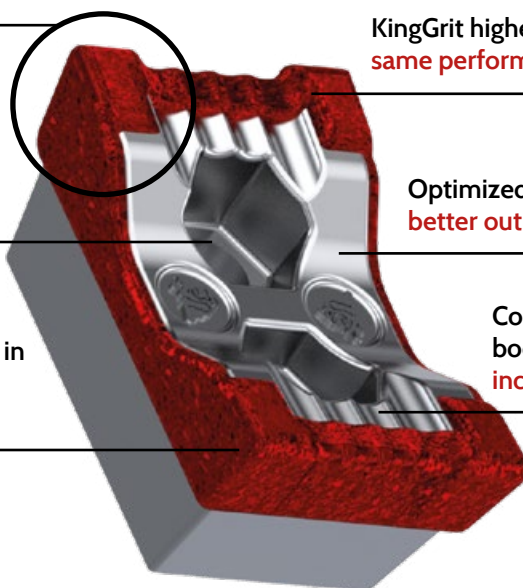
KingGrit highest quality virgin carbide grit  
**same performance for every batch**

Deep bolt holes  
**easier tooth removal**

Optimized and aggressive cutting angle  
**better output material**

Maximum thickness of hardfacing in areas with highest wear  
**longer tool life**

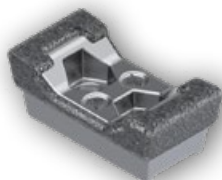
Corrugated surface on the body for optimized material flow  
**increased performance and output**



# KING KONG TOOLS FOR WOOD RECYCLING

FOR MORBARK

## KFS1132-PS



Replacement tooth fitting tub and horizontal grinders from Morbark

Tooth of the Silverstar product line with innovative KingPact design and KingGrit hardfacing

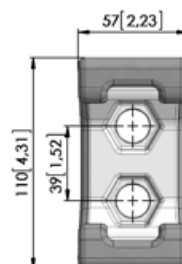
Severe duty version

weight per piece  
2.43 lbs (1.10 kg)

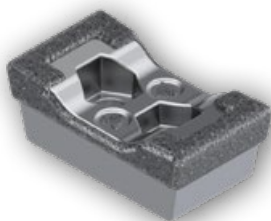


### Fits on models:

- Morbark 1000, Morbark 2600



## KFS1133-PS



Replacement tooth fitting tub and horizontal grinders from Morbark

Tooth of the Silverstar product line with innovative KingPact design and KingGrit hardfacing

Severe duty version

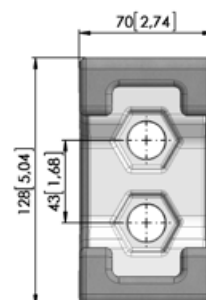
weight per piece  
5.29 lbs (2.40 kg)



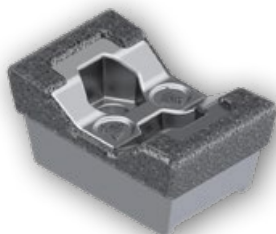
Compatible hardware:  
KSI132, KSI133

### Fits on models:

- Morbark 1250, Morbark 1200XL, Morbark 1300, Morbark 3800, Morbark 3800XL, Morbark 4600XL



## KFS1134-PS



Replacement tooth fitting tub and horizontal grinders from Morbark

Tooth of the Silverstar product line with innovative KingPact design and KingGrit hardfacing

Severe duty version with saddleback

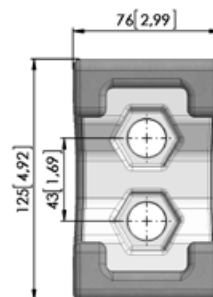
weight per piece  
5.51 lbs (2.50 kg)

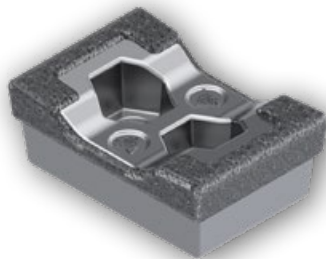


Compatible hardware:  
KSI132, KSI133

### Fits on models:

- Morbark 1250, Morbark 1200XL, Morbark 1300, Morbark 3800, Morbark 3800XL, Morbark 4600XL





## KFS1135-PS



Replacement tooth fitting tub and horizontal grinders from Morbark

Tooth of the Silverstar product line with innovative KingPact design and KingGrit hardfacing

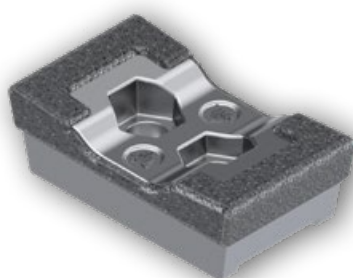
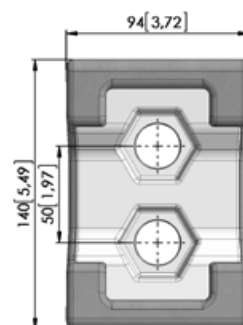
Severe duty version

weight per piece  
8.16 lbs (3.70 kg)



### Fits on models:

- Morbark 5600



## KFS1136-PS



Replacement tooth fitting tub and horizontal grinders from Morbark

Tooth of the Silverstar product line with innovative KingPact design and KingGrit hardfacing

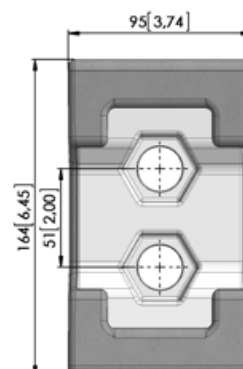
Severe duty version with saddleback

weight per piece  
9.26 lbs (4.20 kg)



### Fits on models:

- Morbark 6600, Morbark 1600



## KSI132

Bolt for KFS1068-P/ KFS1116-P  
3/4" - 10 x 6" UNC, Grade 8

weight per piece  
0.59 lbs (0.27 kg)



## KSI133

Nut, matching KSI132  
3/4" - 10 UNC

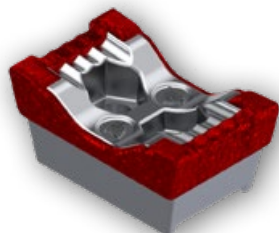
weight per piece  
0.15 lbs (0.07 kg)





# KING KONG TOOLS FOR WOOD RECYCLING

FOR PETERSON  
PACIFIC



## KFS1068-PR



Replacement tooth fitting horizontal grinders from Peterson Pacific

Tooth with innovative KingPact design and KingGrit hardfacing

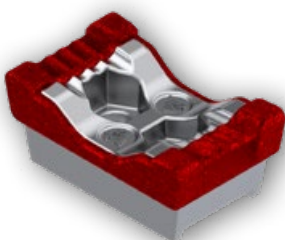
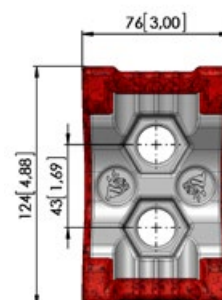
Standard version with saddleback

weight per piece  
5.28 lbs (2.40 kg)



### Fits on models:

- PPC 2700 Serie, PPC 4700 Serie



## KFS1145-PR



Replacement tooth fitting tub and horizontal grinders from Morbark

Tooth with innovative KingPact design and KingGrit hardfacing

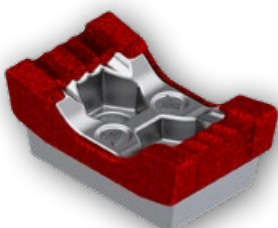
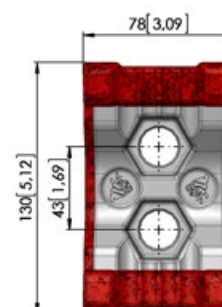
Long version with saddleback

weight per piece  
5.09 lbs (2.31 kg)



### Fits on models:

- PPC 4700 Serie



## KFS1116-PR



Replacement tooth fitting horizontal grinders from Peterson Pacific

Tooth with innovative KingPact design and KingGrit hardfacing

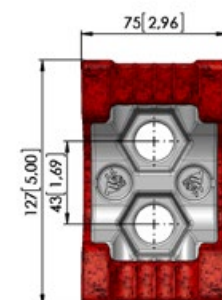
Standard version

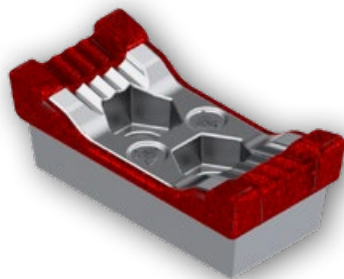
weight per piece  
4.84 lbs (2.20 kg)



### Fits on models:

- PPC 2700 Serie, PPC 4700 Serie





## KFS1081-PR



Replacement tooth fitting horizontal grinders from Peterson Pacific

Tooth with innovative KingPact design and KingGrit hardfacing

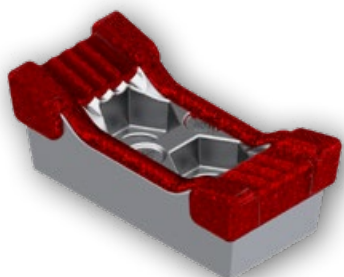
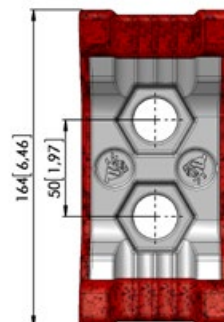
Standard version

weight per piece  
7.19 lbs (3.26 kg)



### Fits on models:

- PPC 5700 Serie, PPC 6700 Serie



## KFS1084-PR



Replacement tooth fitting horizontal grinders from Peterson Pacific

Tooth with innovative KingPact design and KingGrit hardfacing

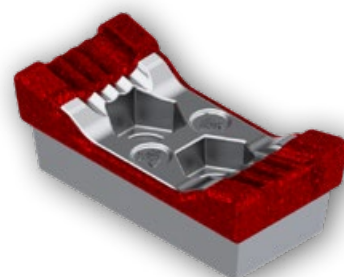
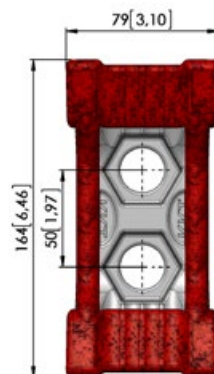
Special version

weight per piece  
6.16 lbs (2.80 kg)



### Fits on models:

- PPC 5700 Serie, PPC 6700 Serie



## KFS1165-PR



Replacement tooth fitting horizontal grinders from Peterson Pacific

Tooth with innovative KingPact design and KingGrit hardfacing

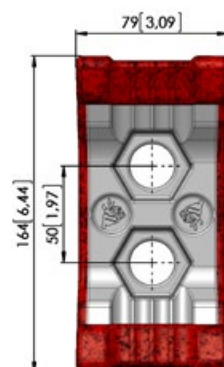
Heavy duty version with more KingGrit

weight per piece  
7.23 lbs (3.28 kg)



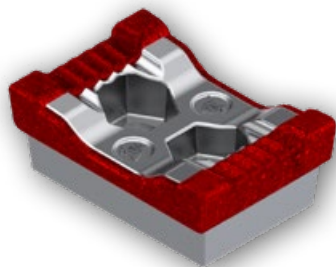
### Fits on models:

- PPC 5700 Serie, PPC 6700 Serie



# KING KONG TOOLS FOR WOOD RECYCLING

FOR PETERSON  
PACIFIC



## KFS1069-PR



Replacement tooth fitting horizontal grinders from  
Peterson Pacific

Tooth with innovative KingPact design and KingGrit  
hardfacing

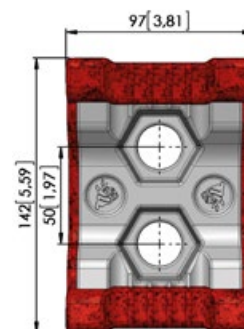
Standard version

weight per piece  
7.56 lbs (3.43 kg)



### Fits on models:

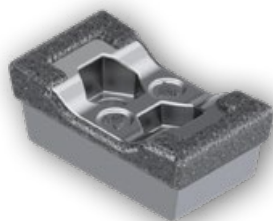
- PPC 7400 Serie





# KING KONG TOOLS FOR WOOD RECYCLING

FOR PETERSON  
PACIFIC



## KFS1133-PS



Replacement tooth fitting horizontal grinders from Peterson Pacific

Tooth of the Silverstar product line with innovative KingPact design and KingGrit hardfacing

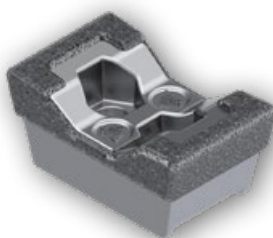
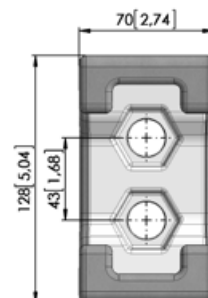
Severe duty version

weight per piece  
5.29 lbs (2.40 kg)



### Fits on models:

- PPC 2700 Serie, PPC 4700 Serie



## KFS1134-PS



Replacement tooth fitting horizontal grinders from Peterson Pacific

Tooth of the Silverstar product line with innovative KingPact design and KingGrit hardfacing

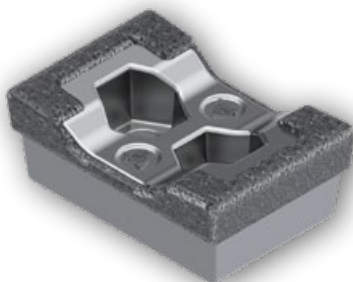
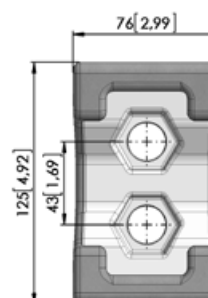
Severe duty version with saddleback

weight per piece  
5.51 lbs (2.50 kg)



### Fits on models:

- PPC 2700 Serie, PPC 4700 Serie



## KFS1135-PS



Replacement tooth fitting horizontal grinders from Peterson Pacific

Tooth of the Silverstar product line with innovative KingPact design and KingGrit hardfacing

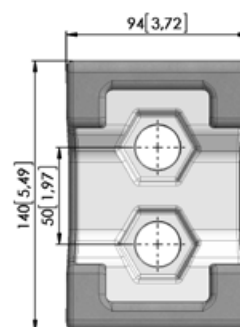
Severe duty version

weight per piece  
8.16 lbs (3.70 kg)

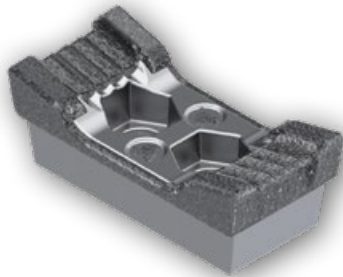


### Fits on models:

- PPC 7400 Serie







## KFS1081-PS



Replacement tooth fitting horizontal grinders from Peterson Pacific

Tooth of the Silverstar product line with innovative KingPact design and KingGrit hardfacing

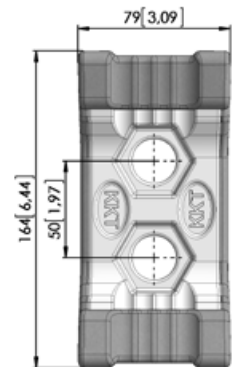
Severe duty version

weight per piece  
7.19 lbs (3.26 kg)

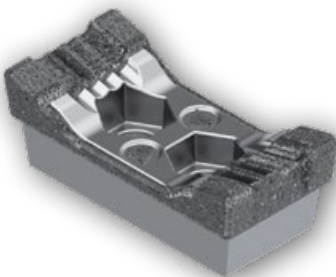


### Fits on models:

- PPC 5700 Serie, PPC 6700 Serie



FOR PETERSON



## KFS1165-PS



Replacement tooth fitting horizontal grinders from Peterson Pacific

Tooth of the Silverstar product line with innovative KingPact design and KingGrit hardfacing

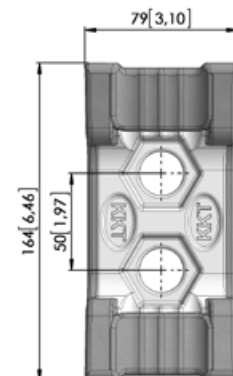
Severe duty version with more KingGrit

weight per piece  
7.23 lbs (3.28 kg)



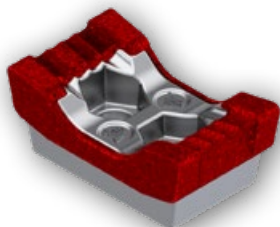
### Fits on models:

- PPC 5700 Serie, PPC 6700 Serie



# KING KONG TOOLS FOR WOOD RECYCLING

FOR PRECISION  
HUSKY



## KFS1116-PR



Replacement tooth fitting tub and horizontal grinders  
from Precision Husky

Tooth with innovative KingPact design and KingGrit  
hardfacing

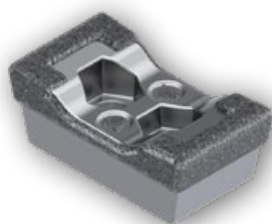
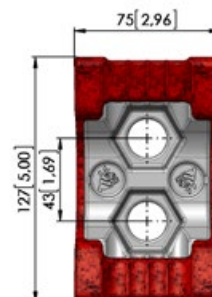
Standard version

weight per piece  
4.84 lbs (2.20 kg)



### Fits on models:

- Progrind 4000, Progrind 5100, Progrind 5200,  
Progrind 6000



## KFS1133-PS



Replacement tooth fitting tub and horizontal grinders  
from Precision Husky

Tooth of the Silverstar product line with innovative  
KingPact design and KingGrit hardfacing

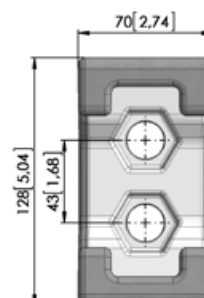
Severe duty version

weight per piece  
5.29 lbs (2.40 kg)



### Fits on models:

- Progrind 4000, Progrind 5100, Progrind 5200,  
Progrind 6000





Benefit from our innovative **KingPact** grinder tip design and maximize the performance and tool life of your grinder tips. The reinforced corners and our highest quality **KingGrit** carbide hardfacing optimize the performance of your grinding operation and save you money!

Added steel volume in corners  
consistently high cutting performance

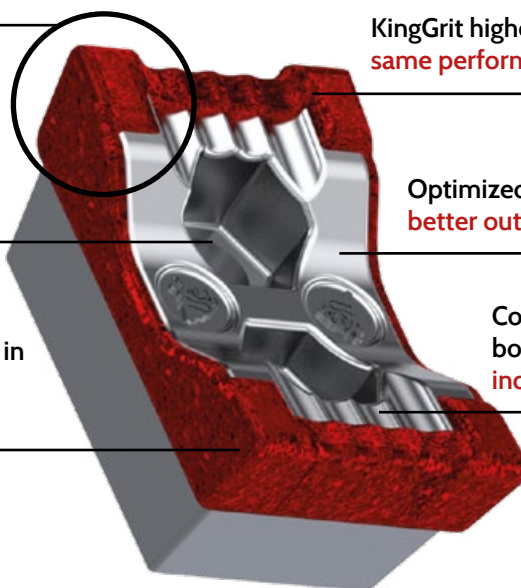
KingGrit highest quality virgin carbide grit  
same performance for every batch

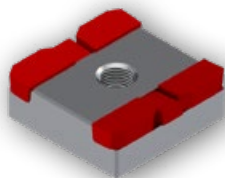
Deep bolt holes  
easier tooth removal

Optimized and aggressive cutting angle  
better output material

Maximum thickness of hardfacing in  
areas with highest wear  
longer tool life

Corrugated surface on the  
body for optimized material flow  
increased performance and output





## KFS1118

Replacement tooth fitting Maxigrind shredders from Rexworks

Tooth with solid tungsten carbide tips (6 carbides)

Reversible version



weight per piece  
1.39 lbs (0.63 kg)



### Application recommendation:

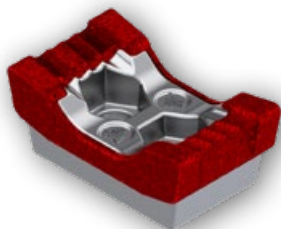
- green waste, tree logs, compost, shingle grinding





# KING KONG TOOLS FOR WOOD RECYCLING

FOR ROTOCHOPPER



## KFS1116-PR



Replacement tooth fitting horizontal grinders from Rotochopper

Tooth with innovative KingPact design and KingGrit hard-facing

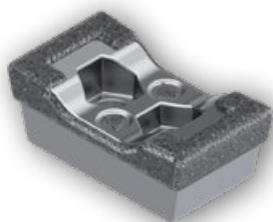
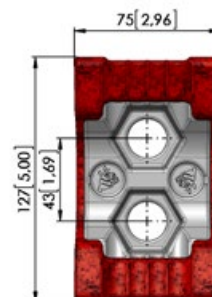
Standard version

weight per piece  
4.84 lbs (2.20 kg)



### Fits on models:

- Rotochopper 266



## KFS1133-PS



Replacement tooth fitting horizontal grinders from Rotochopper

Tooth of the Silverstar product line with innovative KingPact design and KingGrit hardfacing

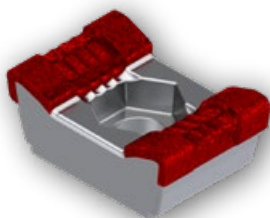
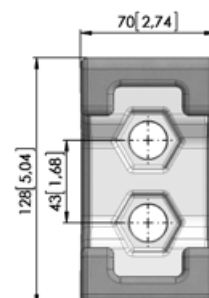
Severe duty version

weight per piece  
5.29 lbs (2.40 kg)



### Fits on models:

- Rotochopper 266



## KFS1198-PR



Replacement tooth fitting horizontal grinders from Rotochopper

Tooth with innovative KingPact design and KingGrit hard-facing

Standard version with saddleback

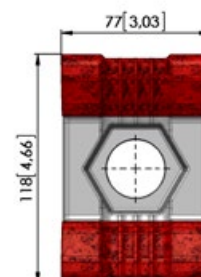
weight per piece  
4.84 lbs (2.20 kg)









### Fits on models:

- Rotochopper B-66

Compatible hardware:  
KSI162, KSI163, KSI164





	<b>KSI162</b> Bolt 1 1/8"-12 UNF x 4 1/2" Gr. 8	weight per piece 1.32 lbs (0.60 kg)	
	<b>KSI163</b> Helical spring lock washer 1 1/8" Gr. 8	weight per piece 0.22 lbs (0.10 kg)	
	<b>KSI164</b> Nut 1 1/8" - 12 Gr. 8	weight per piece 0.33 lbs (0.15 kg)	

# KING KONG TOOLS FOR WOOD RECYCLING

FOR TANA



\*n/a in the USA

weight per piece  
4.69 lbs (2.13 kg)



Compatible hardware:  
KFS1229, KSI204

## KFS1228

Replacement tooth fitting slow speed shredders from TANA

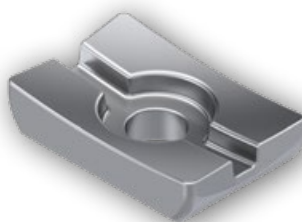
Tooth made out of wear resistant steel

Standard version



### Application recommendation:

- residential and commercial waste, contaminated grinding material



\*n/a in the USA

weight per piece  
2.31 lbs (1.05 kg)



## KFS1229

Tool adapter for replacement tooth KFS1228, fitting slow speed shredders from TANA

Adapter made out of wear resistant steel

Standard version



## KSI204

Bolt  
M24x3x140mm

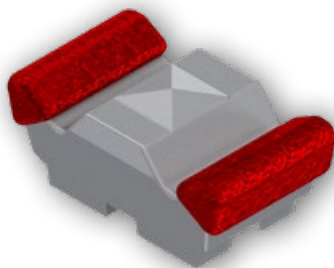
weight per piece  
1.50 lbs (0.68 kg)





# KING KONG TOOLS FOR WOOD RECYCLING

FOR TEREX CBI



weight per piece  
7.03 lbs (3.19 kg)



## KFS1384-P

Replacement tooth fitting horizontal grinders from Terex CBI

Tooth with wear resistant KingGrit hardfacing

Impact resistant version

### Application recommendation:

- wood waste, contaminated grinding material



weight per piece  
9.04 lbs (4.10 kg)



## KFS1406-P

Replacement tooth fitting horizontal grinders from Terex CBI

Tooth with wear resistant KingGrit hardfacing

Impact resistant version

### Application recommendation:

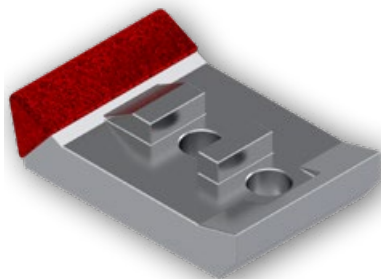
- wood waste, contaminated grinding material

### Fits on models:

- Terex CBI 6800







## KFS1053-1-P

Replacement tooth fitting horizontal grinders from Terex CBI

Tooth with wear resistant KingGrit hardfacing

Impact resistant version



weight per piece  
24.38 lbs (11.06 kg)



Compatible hardware  
KSI438, KSI439, KSI440

### Application recommendation:

- wood waste, contaminated grinding material



### KSI438

Bolt  
1 1/4-7 UNC x 8 Grade 8

weight per piece  
3.53 lbs (1.60 kg)



### KSI439

Washer  
SAE 1/4" M33 DIN 125

weight per piece  
0.22 lbs (0.10 kg)



### KSI440

Lock nut  
1 1/4-7 UNC Grade C

weight per piece  
0.44 lbs (0.20 kg)



# KING KONG TOOLS FOR WOOD RECYCLING

FOR TEREX ECOTEC



## KFS462-PR



Replacement tooth fitting horizontal grinders from Terex Ecotec of the TBG grinder series

Tooth with wear resistant KingGrit hardfacing

Impact resistant version



weight per piece  
7.05 lbs (3.20 kg)



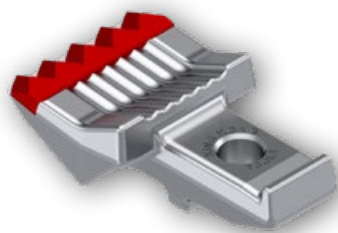
Compatible hardware  
KSI104, KSI128, KSI134

### Application recommendation:

- wood waste, contaminated grinding material

### Fits on models:

- Terex Ecotec TBG530T, TBG630



## KFS460-2

Replacement tooth fitting horizontal grinders from Terex Ecotec of the TBG grinder series

Tooth with five heavy duty tungsten carbide tips for a very long tool life

Premium version



weight per piece  
6.42 lbs (2.91 kg)



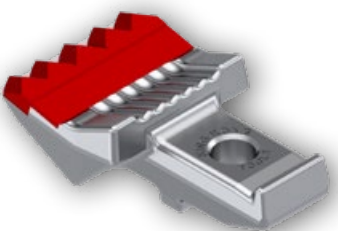
Compatible hardware  
KSI104, KSI128, KSI134

### Application recommendation:

- logs, stumps, abrasive applications

### Fits on models:

- Terex Ecotec TBG530T, TBG630



## KFS461-2

Replacement tooth fitting horizontal grinders from Terex Ecotec of the TBG grinder series

Tooth with five tungsten carbide tips and additional carbide row below for maximum wear resistance

Heavy duty version



weight per piece  
6.49 lbs (2.95 kg)



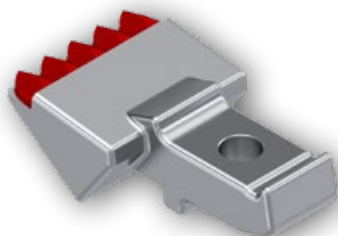
Compatible hardware  
KSI104, KSI128, KSI134

### Application recommendation:

- composting, sandy material, used on the outer positions of the rotor

### Fits on models:

- Terex Ecotec TBG530T, TBG630



## KFS1140

Replacement tooth fitting horizontal grinders from Terex Ecotec of the TBG grinder series

Tooth with five tungsten carbide tips for a very long tool life

Standard version



weight per piece  
7.17 lbs (3.26 kg)



Compatible hardware  
KSI104, KSI128, KSI134

### Application recommendation:

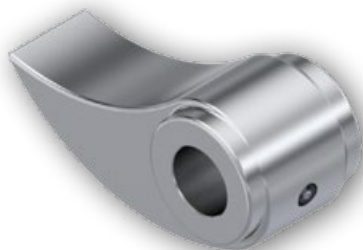
- logs, stumps, for light and medium applications

### Fits on models:

- Terex Ecotec TBG530T, TBG630

# KING KONG TOOLS FOR WOOD RECYCLING

FOR TEREX ECOTEC



## KFS1051

One-piece replacement hammer fitting horizontal grinders from Terex Ecotec of the TBG grinder series

Hammer made out of wear resistant steel

Standard version

weight per piece  
22.55 lbs (10.25 kg)

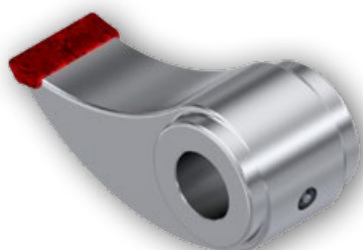
Compatible insert shaft  
KAS01

### Application recommendation:

- wood waste, highly contaminated material

### Fits on models:

- Terex Ecotec TBG530T, TBG630



## KFS1051-P

One-piece replacement hammer fitting horizontal grinders from Terex Ecotec of the TBG grinder series

Hammer with wear-resistant KingGrit hardfacing

Impact resistant version

weight per piece  
22.55 lbs (10.25 kg)

Compatible insert shaft  
KAS01

### Application recommendation:

- wood waste, highly contaminated material

### Fits on models:

- Terex Ecotec TBG530T, TBG630



## KFS466

Clamping wedge fitting horizontal grinders from Terex Ecotec of the TBG grinder series

Wedge made out of wear resistant steel

Extra-wide version for additional holder protection

weight per piece  
2.67 lbs (1.21 kg)

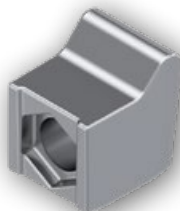


### Application recommendation:

- for all wood grinding applications recommended

### Fits on models:

- Terex Ecotec TBG530T, TBG630



## KFS1030

Clamping wedge fitting horizontal grinders from Terex Ecotec of the TBG grinder series

Wedge made out of wear resistant steel

Standard version

weight per piece  
1.65 lbs (0.75 kg)

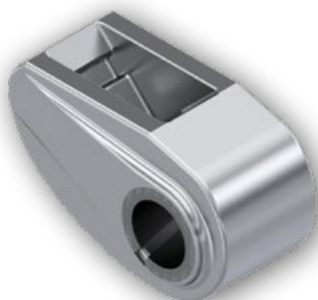


### Application recommendation:

- for all wood grinding applications recommended

### Fits on models:

- Terex Ecotec TBG530T, TBG630



## KHS1005

Tool holder fitting horizontal grinders from Terex Ecotec of the TBG grinder series

Holder made out of wear resistant steel

Standard version

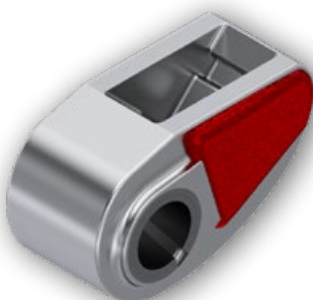
weight per piece  
23.15 lbs (10.50 kg)

### Application recommendation:

- for all wood grinding applications recommended

### Fits on models:

- Terex Ecotec TBG530T, TBG630



## KHS1005-P-L

Tool holder fitting horizontal grinders from Terex Ecotec of the TBG grinder series

Holder made out of wear resistant steel

Special version with KingShield hardfacing left

weight per piece  
24.20 lbs (11.00 kg)

### Application recommendation:

- used on the outer positions of the rotor

### Fits on models:

- Terex Ecotec TBG530T, TBG630





### KHS1005-P-R

Tool holder fitting horizontal grinders from Terex Ecotec of the TBG grinder series

Holder made out of wear resistant steel

Special version with KingShield hardfacing right

weight per piece  
24.20 lbs (11.00 kg)

#### Application recommendation:

- used on the outer positions of the rotor

#### Fits on models:

- Terex Ecotec TBG530T, TBG630



### KAS11

Insert shaft fitting horizontal grinders from Terex Ecotec of the TBG grinder series

Insert shaft made out of wear resistant steel

Standard version

weight per piece  
57.76 lbs (26.20 kg)

#### Application recommendation:

- fitting tool holder KHS1005 as well as replacement hammers KFS1051 and KFS1051-P

Shaft diameter: 50 mm  
Length: 1730 mm



### KS1104

Bolt  
M22x1,5x140mm -10.9 DIN960

weight per piece  
1.12 lbs (0.51 kg)



### KS1128

Nut / Lock nut  
M22x1,5 - 10.9 DIN980

weight per piece  
0.15 lbs (0.07 kg)

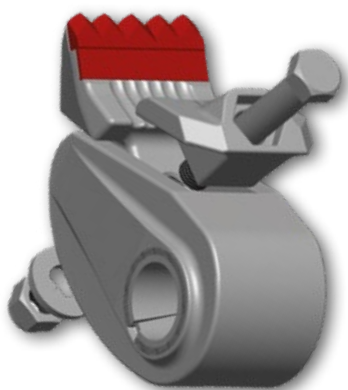


### KS1134

Washer, curved  
M22 Fdst DIN6796

weight per piece  
0.13 lbs (0.06 kg)





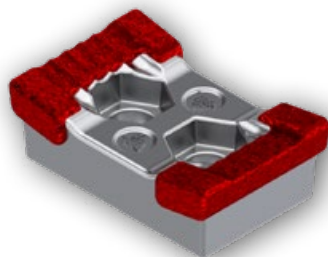
### Your advantages with KingKong-Tools:

---

- perfectly rigid system with extra wide support surface
- extra-wide clamping wedge for reduced holder wear
- high material output due to aggressive cutting angle
- different tooth options to match your application

# KING KONG TOOLS FOR WOOD RECYCLING

FOR VERMEER



## KFS1115-PR



Replacement tooth fitting tub and horizontal grinders from Vermeer

Tooth with innovative KingPact design and KingGrit hardfacing

Duplex Drum standard version

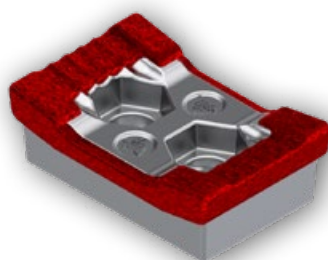
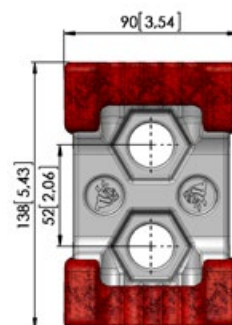
weight per piece  
6.40 lbs (2.91 kg)



Compatible hardware:  
KSI198, KSI148

### Fits on models:

- Vermeer HG6000, Vermeer HG4000, Vermeer TG7000



## KFS1146-PR



Replacement tooth fitting tub and horizontal grinders from Vermeer

Tooth with innovative KingPact design and KingGrit hardfacing

Duplex Drum heavy duty version

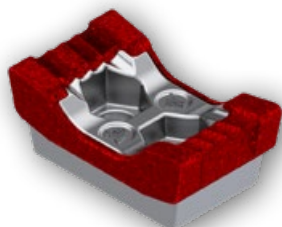
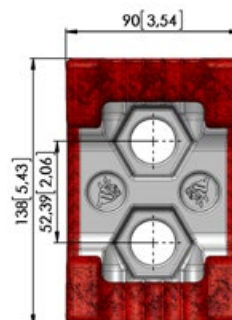
weight per piece  
6.40 lbs (2.91 kg)



Compatible hardware:  
KSI198, KSI148

### Fits on models:

- Vermeer HG6000, Vermeer HG4000, Vermeer TG7000



## KFS1116-PR

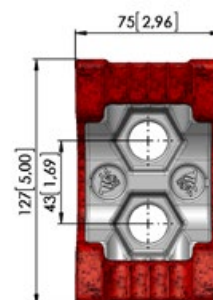


Replacement tooth fitting tub and horizontal grinders from Vermeer

Tooth with innovative KingPact design and KingGrit hardfacing

Standard version

weight per piece  
4.84 lbs (2.20 kg)





## KFS1031-PR



Replacement tooth fitting tub and horizontal grinders from Vermeer

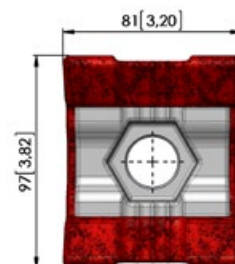
Tooth with KingGrit hardfacing

Standard version

### Fits on models:

- Vermeer HG6000, Vermeer TG400

weight per piece  
3.96 lbs (1.80 kg)



## KFS1318



Replacement tooth fitting tub and horizontal grinders from Vermeer

Planer tooth out of wear resistant steel with sharp cutting edges

Aggressive and reversible version

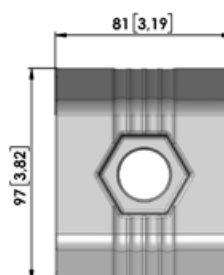
### Application recommendation:

- tree logs and stumps, hardwood, best choice if aggressive cutting action is needed

### Fits on models:

- Vermeer HG6000, Vermeer TG400

weight per piece  
3.20 lbs (1.45 kg)



## KFS1315



Replacement tooth fitting tub and horizontal grinders from Vermeer

Planer tooth out of wear resistant steel with sharp cutting edges

Aggressive and reversible version

### Application recommendation:

- tree logs and stumps, hardwood, best choice if aggressive cutting action is needed

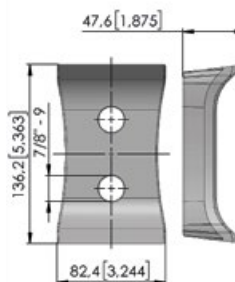
### Fits on models:

- Vermeer HG4000

weight per piece  
4.23 lbs (1.92 kg)






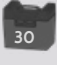


Compatible hardware:  
KSI213



# KING KONG TOOLS FOR WOOD RECYCLING

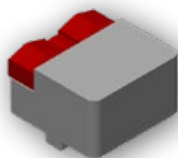
FOR VERMEER

	<b>KSI198</b> Bolt 7/8"-9 UNCx5 1/2" HCS Grade 8	weight per piece 1.17 lbs (0.53 kg)	 30
	<b>KSI148</b> Nut, matching KSI198 7/8" 9 UNC Hexagon Flange Nut	weight per piece 0.26 lbs (0.12 kg)	 150
	<b>KSI213</b> Bolt, matching tool KFS1315 7/8"-9 x 5" YZ8 HCS	weight per piece 1.10 lbs (0.50 kg)	 30





## KFS153



Replacement tooth fitting tub and horizontal grinders from Vermeer

Tooth with solid tungsten carbide wear protection

Severe duty version



weight per piece  
3.30 lbs (1.50 kg)



### Application recommendation:

- compost, regrinding, very abrasive applications

## KFM138



All-purpose chipper knife fitting horizontal grinders from Vermeer

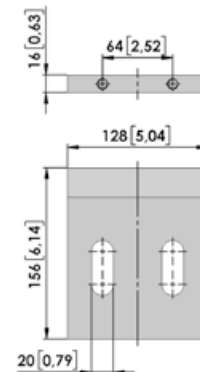
Wear resistant chipper steel, heat-treated, cutting edge sharpened

### Dimensions:

- 156x128x16 mm
- cutting angle 31°

### Fits on models:

- Vermeer HG4000, Vermeer HG6000

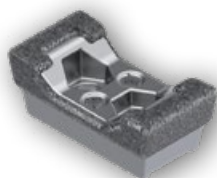


weight per piece  
4.41 lbs (2.00 kg)



# KING KONG TOOLS FOR WOOD RECYCLING

FOR VERMEER



## KFS1132-PS



Replacement tooth fitting tub and horizontal grinders from Vermeer

Tooth of the Silverstar product line with innovative KingPact design and KingGrit hardfacing

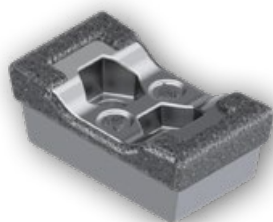
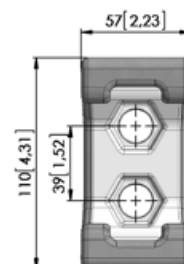
Severe duty version

weight per piece  
2.05 lbs (0.93 kg)



### Fits on models:

- Vermeer TG525



## KFS1133-PS



Replacement tooth fitting tub and horizontal grinders from Vermeer

Tooth of the Silverstar product line with innovative KingPact design and KingGrit hardfacing

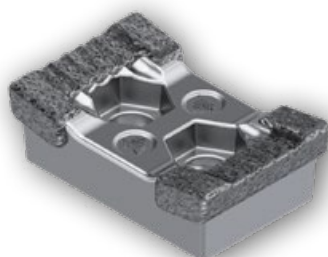
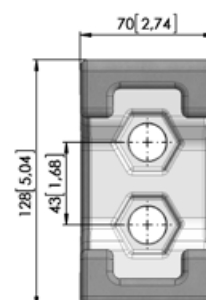
Severe duty version

weight per piece  
5.29 lbs (2.40 kg)



### Fits on models:

- Vermeer TG7000



## KFS1115-PS



Replacement tooth fitting tub and horizontal grinders from Vermeer

Tooth of the Silverstar product line with innovative KingPact design and KingGrit hardfacing

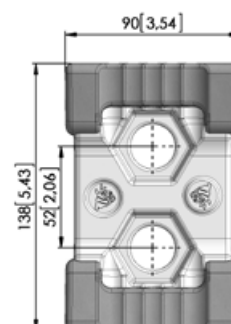
Duplex Drum severe duty version

weight per piece  
6.40 lbs (2.91 kg)



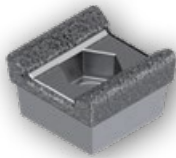
### Fits on models:

- Vermeer HG6000





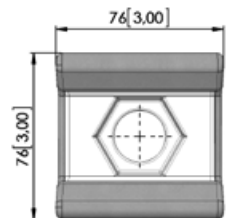
## KFS1219-PS



Replacement tooth fitting tub and horizontal grinders  
from Vermeer

Tooth of the Silverstar product line with KingGrit  
hardfacing

Severe duty version



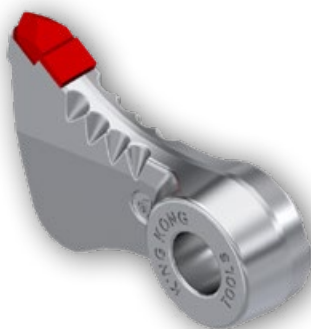
weight per piece  
2.49 lbs (1.13 kg)



FOR VERMEER

# KING KONG TOOLS FOR WOOD RECYCLING

FOR WILLIBALD



## KFS417-2

Replacement hammer fitting Willibald grinders of the MZA and EP series

Hammer with solid tungsten carbide tips (2 carbide tips)

Right version



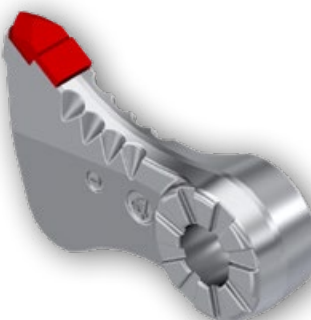
weight per piece  
7.92 lbs (3.60 kg)



Compatible insert shaft:  
KAS05

### Application recommendation:

- green waste, compost, tree logs and stumps



## KFS418-2

Replacement hammer fitting Willibald grinders of the MZA and EP series

Hammer with solid tungsten carbide tips (2 carbide tips)

Left version



weight per piece  
7.92 lbs (3.60 kg)



Compatible insert shaft:  
KAS05

### Application recommendation:

- green waste, compost, tree logs and stumps



## KFS1056-P

Replacement hammer fitting Willibald grinders of the MZA and EP series

Hammer with KingGrit hardfacing

Left version



weight per piece  
7.92 lbs (3.60 kg)



Compatible insert shaft:  
KAS05

### Application recommendation:

- waste wood, contaminated grinding material





## KFS1057-P

Replacement hammer fitting Willibald grinders of the MZA and EP series

Hammer with KingGrit hardfacing

Right version



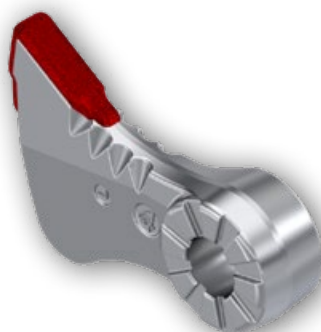
weight per piece  
7.92 lbs (3.60 kg)



Compatible insert shaft:  
KAS05

### Application recommendation:

- waste wood, contaminated grinding material



## KFS1096-P

Replacement hammer fitting Willibald grinders of the MZA and EP series

Premium hammer with extra long KingGrit hardfacing

Left version



weight per piece  
7.92 lbs (3.60 kg)



Compatible insert shaft:  
KAS05

### Application recommendation:

- waste wood, highly contaminated grinding material



## KFS1097-P

Replacement hammer fitting Willibald grinders of the MZA and EP series

Premium hammer with extra long KingGrit hardfacing

Right version



weight per piece  
7.92 lbs (3.60 kg)



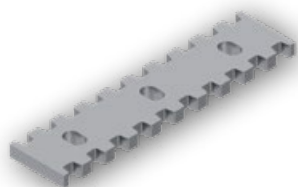
Compatible insert shaft:  
KAS05

### Application recommendation:

- waste wood, highly contaminated grinding material



### KFS1142



Turnable scraper comb fitting Willibald grinders of the EP series

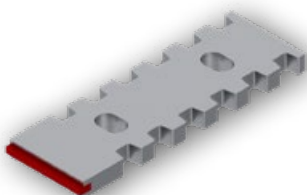
Scraper comb made out of wear resistant steel

Standard version center

---

weight per piece  
11.40 lbs (5.18 kg)

### KFS1143



Turnable scraper comb fitting Willibald grinders of the EP series

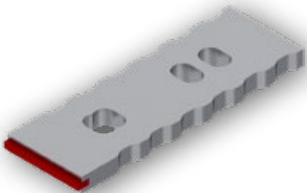
Scraper comb made out of wear resistant steel and additional carbide wear protection

Standard version left and right

---

weight per piece  
8.67 lbs (3.94 kg)

### KFS1232



Turnable scraper comb fitting Willibald grinders of the EP series

Scraper comb made out of wear resistant steel and additional carbide wear protection

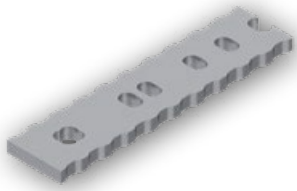
Standard version left and right

---

weight per piece  
8.12 lbs (3.69 kg)



## KFS1233



Turnable scraper comb fitting Willibald grinders of the EP series

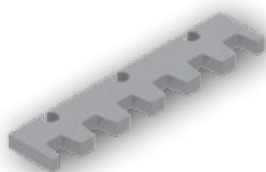
Scraper comb made out of wear resistant steel

Standard version center

---

weight per piece  
10.74 lbs (4.88 kg)

### KFS597



Scrapper comb fitting Willibald grinders of the MZA and EP series

Scrapper comb made out of wear resistant steel

Standard version straight

---

weight per piece  
7.04 lbs (3.20 kg)

### KAS05



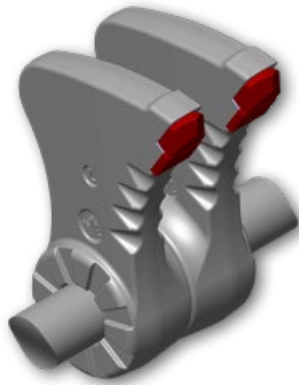
Insert shaft fitting all Willibald grinders of the MZA and EP series

Shaft made out of wear resistant steel

---

shaft diameter:	35 mm
length:	1450 mm

weight per piece  
22.88 lbs (10.40 kg)



## Your advantages with KingKong-Tools:

---

- longer tool life due to very big tungsten carbide tips in optimized grades
- steel body with innovative tool design for better material flow
- reduced bore wear due to matched hardness of shaft and bore
- huge variety of tool options available - get the right tool for every application!

# KING KONG TOOLS FOR WOOD RECYCLING

FOR WILLIBALD



## KFS1361

Replacement tooth fitting Willibald grinders with Ø50mm insert shaft and a tool holder with two M16 holes

Tooth with embedded tungsten carbide tips, additional carbide wear protection on the steel body and two M16 fine threads

Heavy duty version

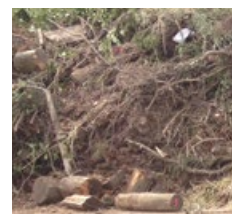
weight per piece  
4.92 lbs (2.23 kg)



Compatible hardware:  
KSI214

### Application recommendation:

- root wood, demolition wood, pallets, waste wood



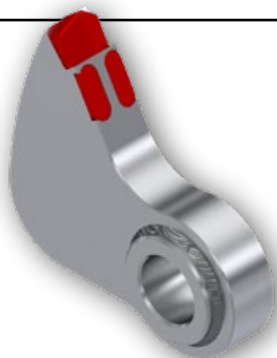
## KSI214

Bolt  
M16x1,5x110 DIN960 10.9

weight per piece  
0.44 lbs (0.20 kg)



## KFS531-2



Replacement hammer fitting Willibald grinders with Ø50mm insert shaft

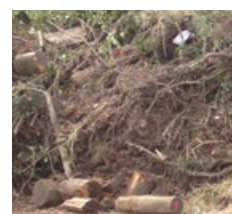
Hammer with solid tungsten carbide tip and 2 additional carbides

Standard version

weight per piece  
18.48 lbs (8.40 kg)

### Application recommendation:

- root wood, demolition wood, pallets, waste wood







## KFS1175-1



Replacement tooth of the two-piece KingKong-Tools tool system fitting Willibald grinders with tool holder KHS1017

Tooth with embedded tungsten carbide tips, additional carbide wear protection on the steel body and one M16 fine thread



Heavy duty version

weight per piece  
2.66 lbs (1.21 kg)



### Application recommendation:

- root wood, demolition wood, pallets, waste wood

## KHS1017



Tool holder of the two-piece KingKong-Tools tool system fitting Willibald grinders

Holder made out of wear resistant steel fitting on a Ø50mm insert shaft

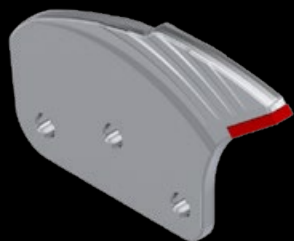
Standard version

weight per piece  
15.05 lbs (6.84 kg)

### Compatible tooth options:

- KFS1175-1

# TOOLS FOR COMPOST TURNERS



# CONTENT

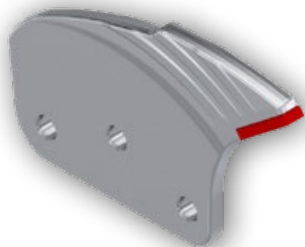
---

Tools for Compost Turners..... 98

For Willibald.....100

# KING KONG TOOLS FOR COMPOST TURNERS

FOR WILLIBALD



## KFS1377

Carbide-tipped replacement tooth fitting Willibald compost turners

Tooth with solid tungsten carbide tip

Heavy duty version

---

### Application recommendation:

- for all compost turning applications recommended

weight per piece  
5.18 lbs (2.35 kg)







## FAN CORNER

Introducing the brandnew KingKong-Tools fan collection.



Gear up now with genuine KingKong-Tools apparel, toys, accessories, and more. The perfect gift for business partners and friends.

We strive to provide high quality products in every respect, that's why you can rely on outstanding workmanship and durability of our merchandise articles, just as you can do in regards to our wearparts.

Get into the monkey business and enjoy the latest KingKong-Tools collection!.

[www.kingkong-tools.com](http://www.kingkong-tools.com)



Men (MAK0001): \$98.00  
Women (MAK0002): \$89.00

### Sweat Jacket Contrast Performance

Extremely hard-wearing sweat jacket with contrasting coloured inserts on the sides, shoulders and sleeves, dimensionally stable cuffs with LYCRA® component, non-roughened inside (French terry), neckband, high-quality front zip and side pockets with zip.

**Colors:** Black, Red  
**Sizes:** XS-XXL  
**Material:** 50 % Cotton, 50 % Polyester



Men (MAK0003): \$106.00  
Women (MAK0004): \$99.00

### Tec-Jacket KingKong-Tools

Functional, sporty cut jacket with extended, slightly rounded back, dividing seams for perfect fit, stand-up collar and sleeve cuffs. High-quality, contrasting colour two-way front zip with chin protection, pre-laid side seams and slide-in pockets with click-down zips.

**Colors:** Black, Red  
**Sizes:** XS-XXL  
**Material:** 52 % Polyester, 38 % Polyamid, 10 % Spandex



Men (MAK0005): \$90.00  
Women (MAK0006): \$87.00

### Rain Jacket KingKong-Tools

Lightweight, functional, waterproof and windproof rain jacket with climate regulating mesh lining, comfortable soft fleece on the inside of the collar, a hood that can be integrated into the collar and adjusted in width, high-quality front zip with double windstop flap and outside pockets with zip.

**Colors:** Black, Red  
**Sizes:** XS-XXL  
**Material:** 2-Layer-Laminat made of 100 % Polyester



Men (MAK0007): \$115.00  
Women (MAK0008): \$111.00

### Light-Softshell Vest

Lightweight, breathable, hard-wearing, water- and windproof soft shell vest with high-quality 2-way front zip with internal wind protection flap, chin protection and reflective piping as well as side zip pockets.

**Colors:** Black, Red  
**Sizes:** XS-XXL  
**Material:** 2-Layer-Laminat made of 100 % Polyester



Men (MAK0009): \$139.00  
Women (MAK0010): \$130.00

### Softshell Jacket KingKong-Tools

Warming, breathable, water- and windproof softshell jacket with detachable hood, adjustable hem with drawcord, high-quality 2-way front zipper with inner wind protection flap and chin protection as well as zipper pocket on left sleeve and side zipper pockets.

**Colors:** Black, Red  
**Sizes:** XS-XXL  
**Material:** Softshell made of Interlock-3-Layer-Laminat (100 % Polyester)



Men (MAK0011): \$25.00  
Women (MAK0012): \$25.00  
Kids (MAK0013): \$20.00

### T-Shirt: My boss is a monkey

T-shirt with round neck and funny „My boss is a monkey“ print. Available as men's, women's and children's shirt.

**Colors:** Black  
**Sizes:** XS-XXL / Kids Sizes: 128-176  
**Material:** Single-Jersey made of 100 % Cotton



Men (MAK0014): \$25.00  
Women (MAK0015): \$25.00  
Kids (MAK0016): \$20.00

### T-Shirt: KingKong-Tools

T-shirt with round neck and fashionable „KingKong-Tools“ print. Available as men's, women's and children's shirt.

**Colors:** Black  
**Sizes:** XS-XXL / Kids Sizes: 128-176  
**Material:** Single-Jersey made of 100 % Cotton

## FAN CORNER



Part#: MAK0017  
Price: \$7.90

### Cup „Since 1996“

Beautiful cup with KingKong-Tools retro print „Since 1996“ and striking red color on the inside.  
Easy to clean, dishwasher safe.

Color: Black / Red



Part#: MAK0020  
Price: \$10.90

### Classic Cap: KingKong-Tools

Classic cap made of very robust material and KingKong-Tools logo print.

Color: Black  
Sizes: One size fits all



Part#: MAK0021  
Price: \$13.90

### Sport Cap Black

Fashionable sports cap with KingKong-Tools logo on the side. Ideal for hot summer days due to its light fabric.

Color: Black  
Sizes: One size fits all



Part#: MAK0021  
Price: \$13.90

### Sport Cap Grey

Fashionable sports cap with KingKong-Tools logo on the side. Ideal for hot summer days due to its light fabric.

Color: Grey  
Sizes: One size fits all



Part#: MAK0022  
Price: \$11.00

### Beanie KingKong-Tools

Warm knitted hat with KingKong-Tools logo for cold winter days.

**Color:** Black  
**Sizes:** One size fits all



Part#: MAK0027  
Price: \$12.00

### KingKong-Tools Buff

Very versatile buff with printed KingKong-Tools logos. Can be used both as a hose scarf and as headgear.

**Color:** Black



Part#: MAK0023  
Price: \$79.90

### Wooden block case

Beautiful natural wooden block case with 60 natural high quality building blocks for constructing towns, houses and whatever other phantasies little constructors may have. Suitable for children age 2 - 8.

60 parts, manufactured at local handicapped workshops



Small (MAK0024): \$18,00  
Medium (MAK0025): \$20,00

### KingKong-Tools Gorilla

A little Gorilla to love. Black with original brown spot on head; grey back, fluffy, high quality. Made in Germany.

**Sizes:**  
Small: 20cm high  
Medium: 25cm high

## FAN CORNER



Small (MAK0028): \$20.00  
Large (MAK0029): \$30.00

### KingKong-Tools Towel / Shower Towel

Cuddly shower towel with KingKong-Tools logo. Available in two different sizes.

**Color:** White  
**Material:** 100% Cotton  
**Sizes:** Small: 50x100 cm  
Large: 70x140 cm



Part#: MAK0030  
Price: \$23.90

### Umbrella

Eye-catching, red umbrella with imprinted KingKong-Tools logo.

**Color:** Red



Part#: MAK0031  
Price: \$12.00

### KingKong-Tools Cards

Card game classics in the KingKong-Tools Edition for the whole family. First to discard all cards wins.



Part#: MAK0034  
Price: \$39.90

### KingKong-Tools Solar Powerbank

Solar Powerbank with KingKong-Tools logo imprint and integrated LED flashlight in nice aluminum design. Simply place in the sun to start the charging process. If the sun is not shining, simply recharge the powerbank via USB. Powerbank comes with overvoltage protection and connectors for Android and iOS devices.

**Material:** Aluminum  
**Capacity:** 8000 mAh





Part#: MAK0019  
Price: \$24.90

### KingKong-Tools „Rubik's Cube“

Challenging magic cube for puzzling. With different colored KingKong-Tools logos on all sides.

---



Part#: MAK0032  
Price: \$12.90

### King Kong Tools Sticker Set

High quality KingKong-Tools logo stickers with transparent background and die cut logo. Made for outdoor use.

---

**Color:** White, Black  
**Size:** Logo Diameter = 9.5 cm (small) and 24.5 cm (large)



Part#: MAK0033  
Price: \$17.90

### KingKong-Tools Socks

Fashionable socks with King Kong Tools pattern for women, men and young people. The mixture of soft cotton, polyamide and spandex offers a very good fit and comfort.

---

**Color:** Black  
**Sizes:** 36-40 / 41-46  
**Material:** 70% Cotton, 20% Polyamide, 3% Spandex

# MANUFACTURING PROCESSES

## Carbide tipped tools

The manufacture of our high-performance carbide-tipped tools requires several production steps of high complexity. Every single one of these steps contributes crucially to the final quality of the finished product. This is the reason why we focus so intensely on quality control and inspections throughout the complete manufacturing process.

## Fabrication of the carbide tips

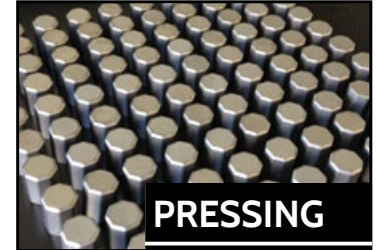
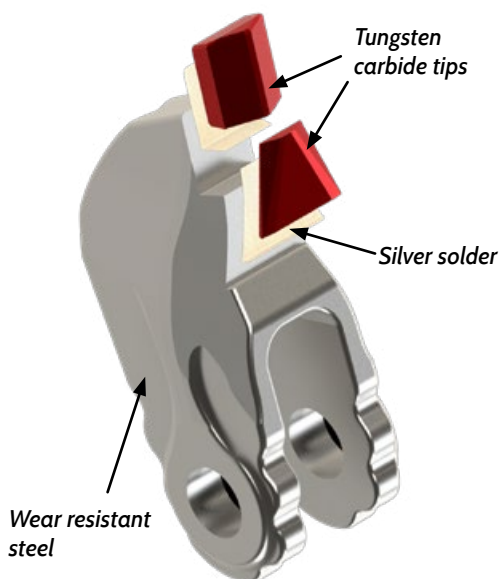
The carbide cutting inserts of our tools are made by pressing and sintering of powder mixtures consisting mainly of tungsten carbide (WC) and Cobalt (Co). The individual powder recipe, its grain size, and the carbide geometry are exactly adjusted to the intended application of the tool. First, the different powder components are mixed and then milled to the designated grain size. In the following step, the powder mixture is prepared for pressing by granulation in a spray tower. Mix ratio, granule size, and other properties of the granulate are permanently monitored in the laboratory and then released for the subsequent manufacturing processes.

## Connecting carbide tip and tool body

The body of the tool is made of high quality wear resistant steel, drop forged and machined to a very high precision. Specifically developed brazing alloys are used to fix the carbide inserts extremely tight to the steel body. The holding force of the brazing joint is permanently monitored and documented by breaking tests. According to the application requirements, the steel body will be hardened, either partly or completely, thus reaching a very high resistance against wear and tear.

A final jet blasting gives the tools a silk-mat shining surface which also serves as an efficient rust-protective finish.

Our strictly observed permanent quality control of all manufacturing steps enables us to supply tools of consistently high performance and reliability.







## Tools with hardfacing

### King Grit



The King Grit technology is based on the MIG (metal inert gas) welding process where an electric arc burns between the melting and the welding rod in an inert gas atmosphere at extremely high temperatures. Computer-controlled feeding of carbide chips into the welding zone creates a coarse grained surface with carbide chips equally distributed throughout the King Grit layer. Tools protected by King Grit show very high wear resistance, extreme impact tolerance and unmatched cutting ability and are used in the most severe cutting conditions.



### King Shield



In certain applications, cutting ability is not what you are looking for. For example, round shank bits working in abrasive rock experience enormous wear along the steel body of their cutting heads. King Shield perfectly protects the carbide tip from being washed out.

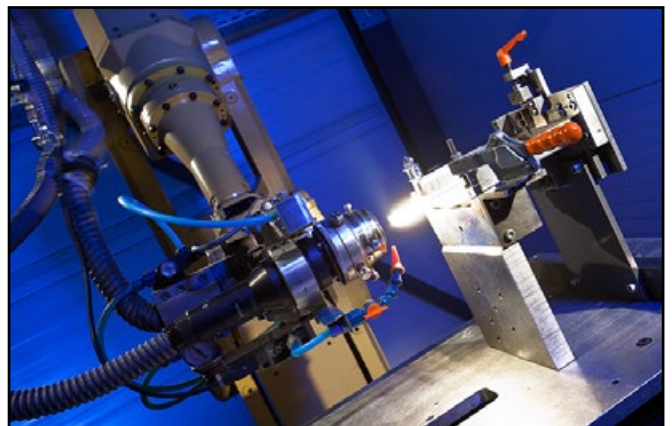
Here, the MIG electrode consists of a special alloy with microscopic WC (tungsten carbide) particles imbedded. The extreme temperatures create a plasma welding layer with a smooth and extremely hard surface. It resists the enormous abrasiveness of quartz containing minerals while showing a high tolerance against impact loads.



## Plasma-Laser-Hardfacing (PLA)

Another technology of KingKong-Tools is the PLA process, also called plasma laser hardfacing. During the plasma laser hardfacing, a laser creates a melted bath on the tool surface into which a defined amount of metal powder is added through a nozzle. The welded beads can create almost any desired shape. This flexibility in applying the wear protection ensures that the cutting edges and base bodies of our tools are optimally and effectively protected against wear.

Using a special manufacturing process, our 3D laser allows us to construct metallic material applications on existing tools as if it were one cast without any loss of quality, density, and free of pores or cracks. As a result, the plasma laser hardfacing process offers exceptional wear protection while maintaining the aggressive cutting properties of our blade tools.



# TEAM

At King Kong-Tools, we strive to offer you the best products and customer service possible.

We combine advanced manufacturing processes with personalized consulting from our experienced and dedicated team, ready to support your wear part needs.

Feel free to contact us with any questions or feedback—we look forward to hearing from you!



Hardy King



Kai Fetscher



Axel Rogg



Alexandra Teufel



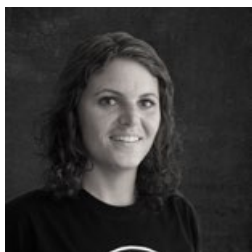
Franziska Pfundstein



Sarah Krug



Cathrin Noder



Franziska Kroner



Jutta Haller



Frank Dresel



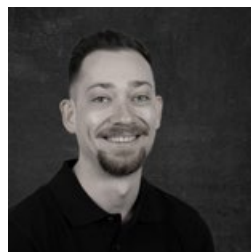
Benjamin Beißwanger



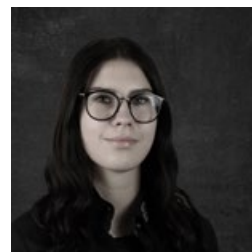
Nils Wagner



Lars Angenendt



Dennis Petschik



Katharina Roth



Christian Wick



Lukas Gaus



Ingo Drongowski



Claudio Del Corso



Mustafa Elazri

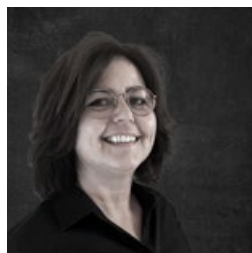




Jens Munk



Philipp Thomann



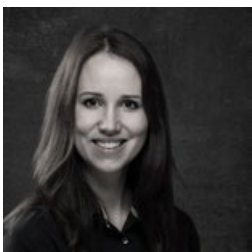
Martina Rapp



Sofia Vázquez Topete



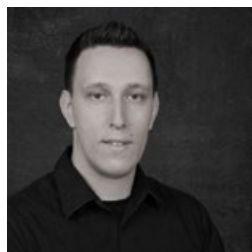
Elias Bernhardt



Anjuska Kogal



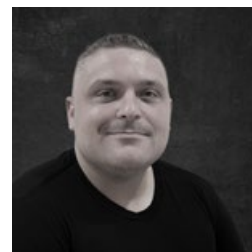
Mihaela Proper



Alen Ivanušič



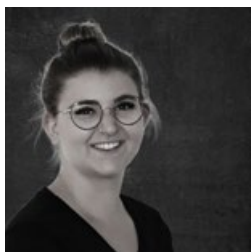
Sharon Vargas



Kasey Coleman



José Alvarado



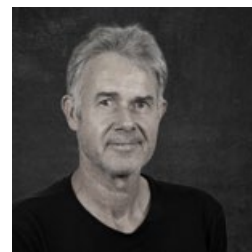
Lena Günter



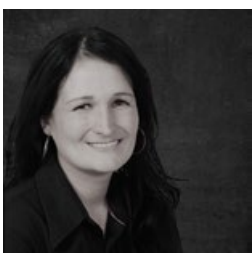
Ulf Zimmermann



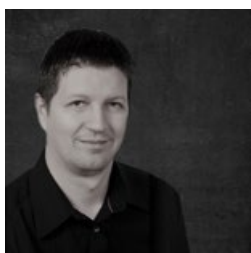
Stefan Ganter



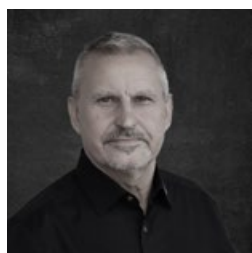
Michael Staiger



Elizabeth Szabo



Tibor Szabo



Andrzej Król



# COMPANY PROFILE

## King Kong Tools: The right choice for reliable performance.

Being used all over the world and under the most severe conditions, our teeth mulch in Canada and the United States, help to maintain roads in Sweden or Austria, or fulfill their daily duties in hundreds of grinders in Germany.

The reliability and the high availability of our tools as well as the fast handling convince more and more customers all over the world.

Our young, highly motivated team will be happy to assist you in selecting a suitable tool for your machine and ensures quick processing of your order as well as an on-time delivery. For a variety of models from established manufacturers of forestry mulchers, stump cutters, wood grinders, rock crushers and wood chippers as well as drilling heads, road milling machines, trenchers and agricultural soil tillage machines, our suitable tools are ready to be shipped from our warehouses in Germany and the USA.

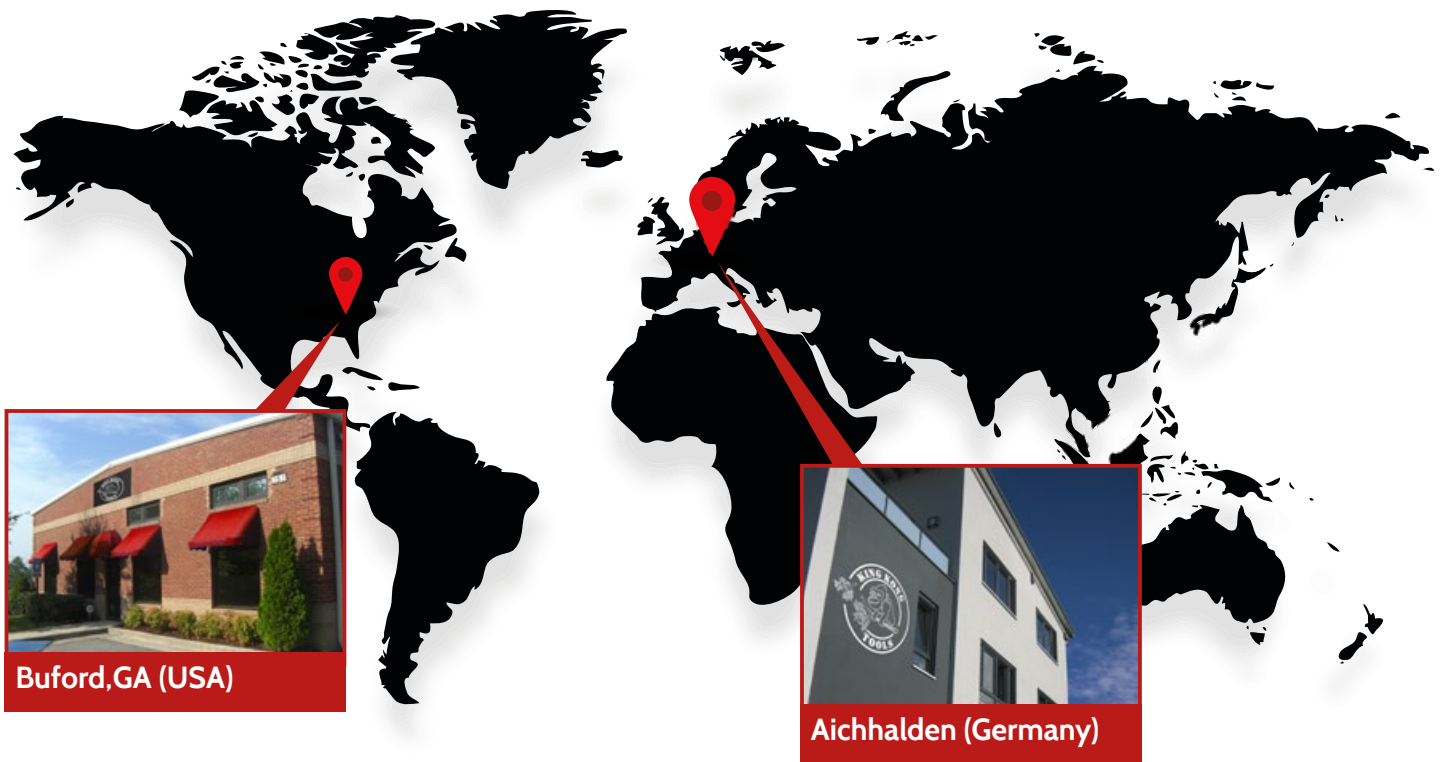
Our products are sand-blasted, packaged in handy units and are subject to a strict quality control - this is what distinguishes us as a German company.

In addition, with many years of application experience, we can optimize the tool specifically for your shredding task.

Our experienced application technicians first analyse the situation on-site together with you. On this basis they create with you an individual solution. The advantage for you is immediately noticeable: by choosing the suitable geometry and carbide type, we increase considerably the output of your mulcher, shredder, chipper, stone crusher or milling machine and extend the service life of your tools at once. That saves you time and money.

**We keep our promises. Take us at our word!**





**Buford,GA (USA)**



**Aichhalden (Germany)**

King Kong Tools is a globally operating company with its headquarters in Aichhalden in the German Black Forest.

The immediate availability of all wear tools is an essential request of our customers. Hence, we carry substantial stock of all standard parts at our warehouse locations in the US as well as at our headquarters in Germany. We serve the markets with sales and service staff operating from there.

#### **Headquarters USA**

Since 2009 our customers in Canada and the USA have been advised and supplied from the US headquarters in Buford, Georgia.



#### **KingKong-Tools GmbH & Co. KG**

Karl-Simon-Str. 12  
78733 Aichhalden  
Germany



**+49-7422-270099-100**



#### **KingKong-Tools LLC**

753 Church Street  
Buford,GA 30518  
USA



**+1-678-765-7930**



[www.kingkong-tools.com](http://www.kingkong-tools.com)



Recycling



Forestry



Construction



Agriculture